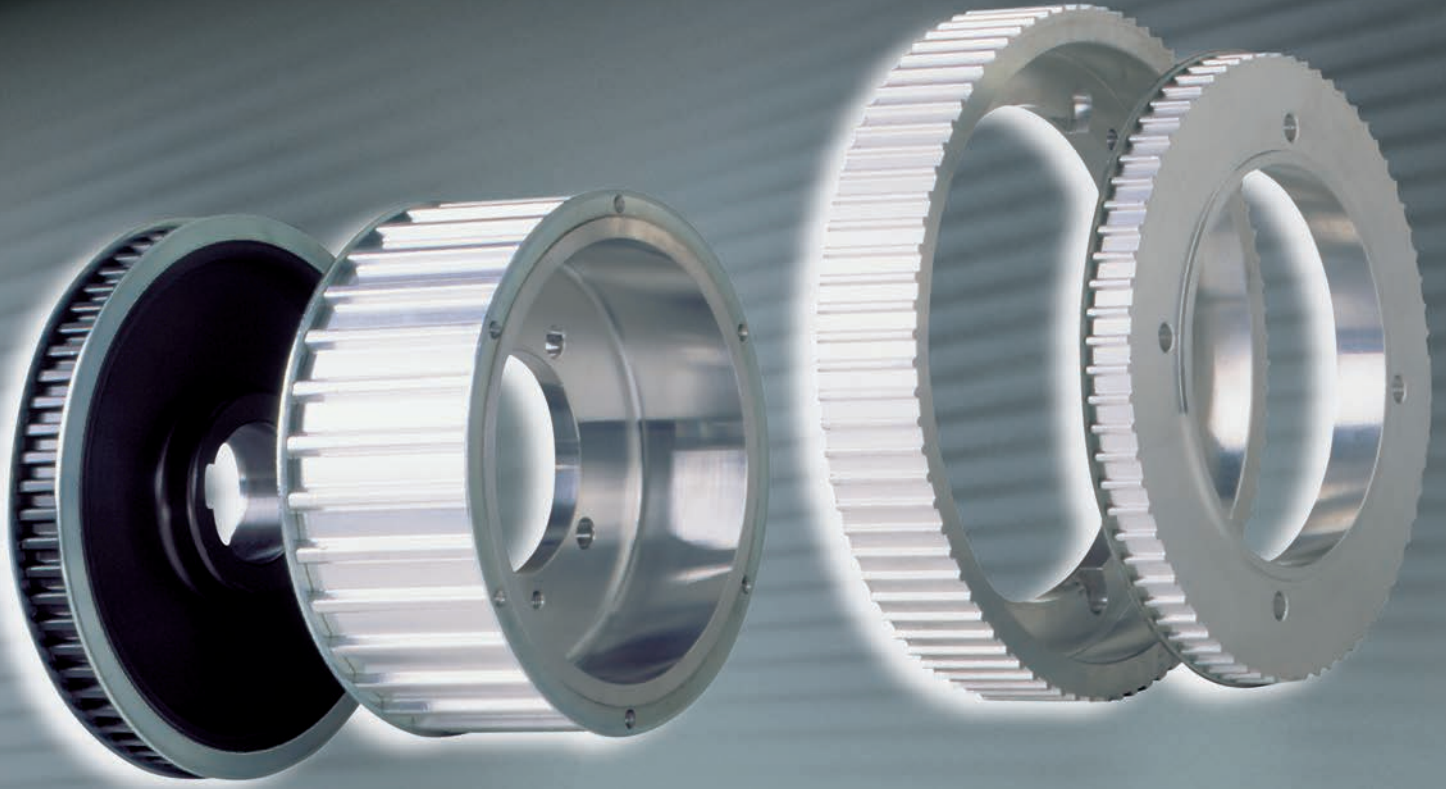


MEGAPULLEY



MEGADYNE



Megadyne è un gruppo leader nella produzione di componenti per trasmissione di moto ad elevata qualità in Europa e nel mondo.

Questo successo si basa sul continuo sviluppo di materiali, tecniche e metodi produttivi, unito ad elevatissimi livelli di specializzazione. Tali caratteristiche costituiscono la risposta alle sempre più esigenti richieste del mercato.

Gli elevati standard qualitativi raggiunti dalle pulegge Megadyne sono ulteriormente garantiti da un'intensa attività di ricerca. L'Unità Produttiva di Caponago (Milano) comprende una delle officine più grandi d'Italia, modernamente organizzata con un vasto assortimento di macchine in grado di realizzare pulegge e piastre da catalogo e su disegno del Cliente.

Megadyne si concentra sulle esigenze del Cliente per proporsi come vero e proprio partner per tutto il sistema delle trasmissioni, focalizzando l'attenzione sia sui metodi di produzione sia sulla qualità.

L'Unità Produttiva di Caponago, come del resto tutte le principali unità produttive Megadyne, ha conseguito e mantiene costantemente la Certificazione del Sistema Qualità.

Megadyne group are leaders in the production of high quality motion transmission components in Europe and worldwide.

This success is based on the continuous development of materials, techniques and production methods, combined with high levels of specialization. These characteristics are the answer to the ever increasing market demands.

The high standards achieved by Megadyne pulleys are further ensured by intensive research. Caponago production facility near Milan includes one of the largest factories in Italy, with a modern organization and a wide range of machines capable of manufacturing pulleys and plates both from catalogue and to customer's design.

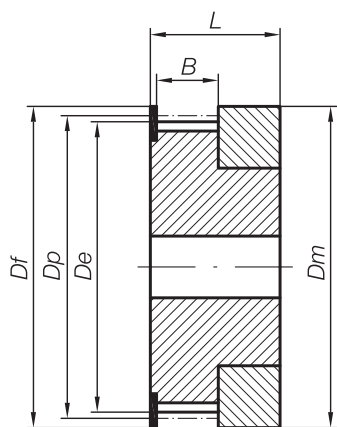
Megadyne concentrates on customer needs to present itself as a real partner for the entire drive system, focusing on both production methods and quality.

Caponago production unit, like all others Megadyne main production units, constantly keeps the achieved quality system certification.

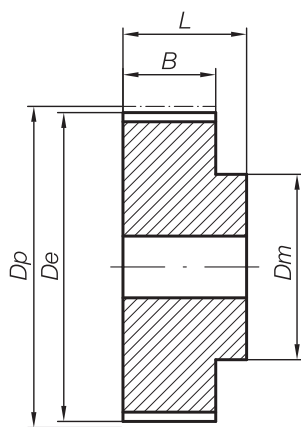


MEGADYNE S.p.A.
UNITÀ PRODUTTIVA DI CAPONAGO
ITALIA - CAPONAGO

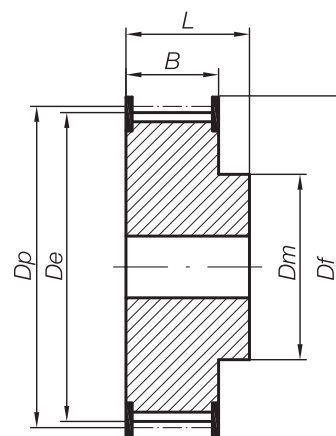
PULEGGE DENTATE TIMING PULLEYS



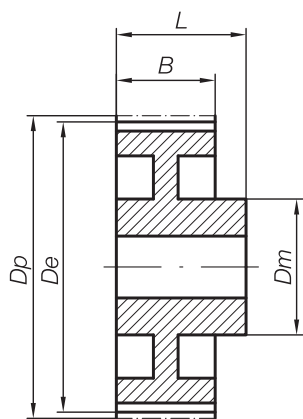
1F



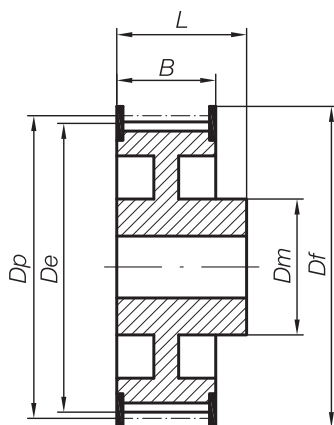
A



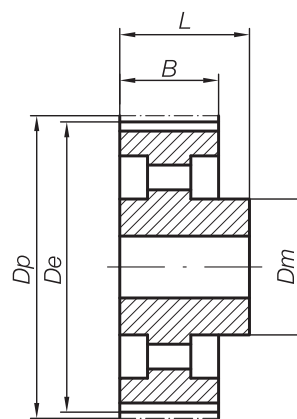
AF



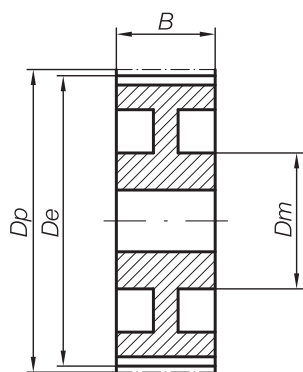
B



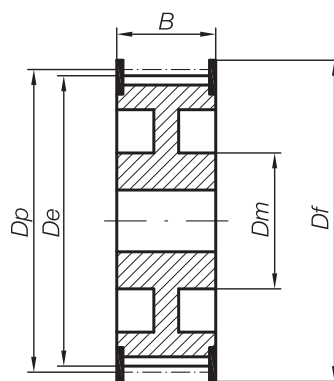
BF



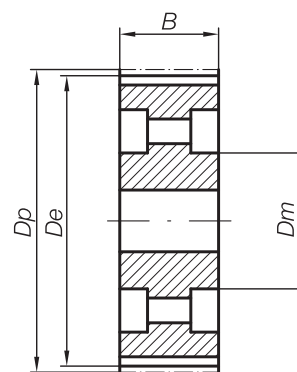
C



SB

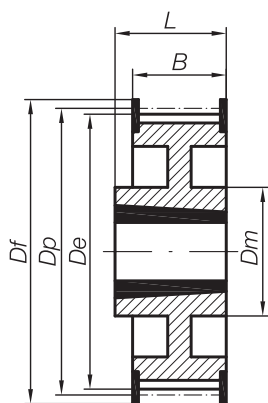


SBF

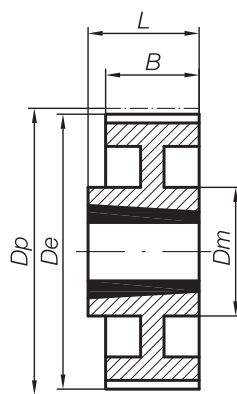


SC

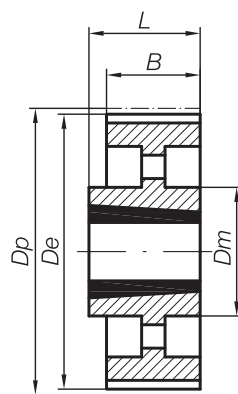
PULEGGE DENTATE PER BUSSOLA CONICA TIMING PULLEYS WITH TAPER LOCK



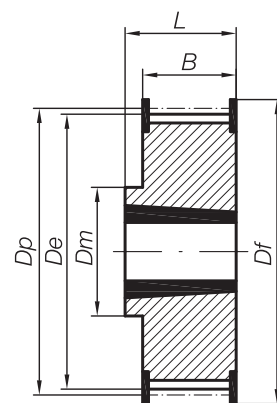
8WF



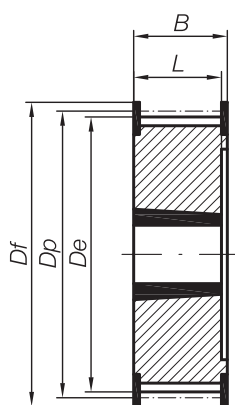
8W



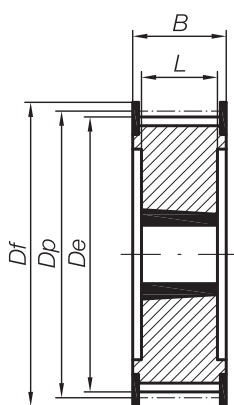
8A



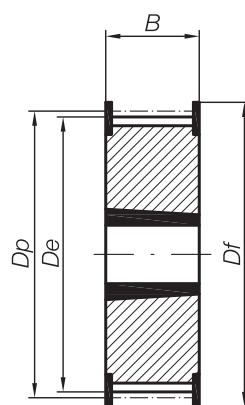
8F



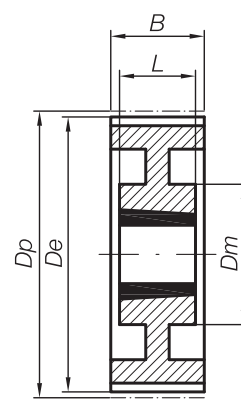
5F



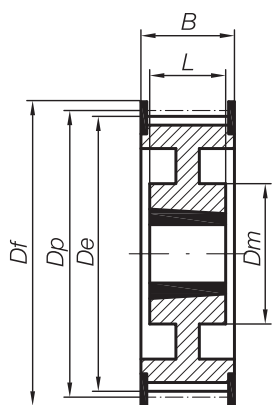
4F



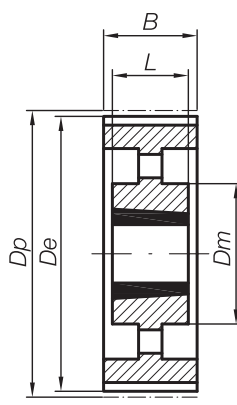
3F



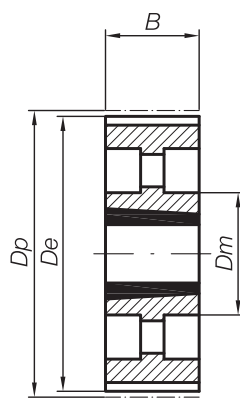
9W



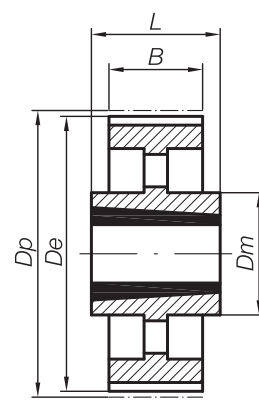
9WF



9A



3A



7A

Pulegge a disegno / <i>Custom made Pulleys</i>	2
Pulegge dentate passo metrico T2,5 / <i>T2.5 metric pitch timing pulleys</i>	4
Pulegge dentate passo metrico T5 / <i>T5 metric pitch timing pulleys</i>	4
Pulegge dentate passo metrico T10 / <i>T10 metric pitch timing pulleys</i>	6
Pulegge dentate passo metrico T20 / <i>T20 metric pitch timing pulleys</i>	8
Pulegge dentate passo metrico AT5 / <i>AT5 metric pitch timing pulleys</i>	9
Pulegge dentate passo metrico AT10 / <i>AT10 metric pitch timing pulleys</i>	10
Pulegge dentate passo metrico AT20 / <i>AT20 metric pitch timing pulleys</i>	12
Pulegge dentate passo in pollici MXL / <i>MXL imperial pitch timing pulleys</i>	13
Pulegge dentate passo in pollici XL / <i>XL imperial pitch timing pulleys</i>	13
Pulegge dentate passo in pollici L / <i>L imperial pitch timing pulleys</i>	14
Pulegge dentate passo in pollici H / <i>H imperial pitch timing pulleys</i>	17
Pulegge dentate passo in pollici XH / <i>XH imperial pitch timing pulleys</i>	22
Pulegge dentate passo HTD3 / <i>HTD3 pitch timing pulleys</i>	23
Pulegge dentate passo HTD5 / <i>HTD5 pitch timing pulleys</i>	24
Pulegge dentate passo HTD8 / <i>HTD8 pitch timing pulleys</i>	25
Pulegge dentate passo HTD14 / <i>HTD14 pitch timing pulleys</i>	27
Pulegge dentate passo HTD8 per bussola conica / <i>HTD8 pitch taper bore timing pulleys</i>	29
Pulegge dentate passo HTD14 per bussola conica / <i>HTD14 pitch taper bore timing pulleys</i>	30
Barre dentate passo metrico T / <i>T Metric pitch timing bars</i>	33
Barre dentate passo metrico AT / <i>AT Metric pitch timing bars</i>	34
Barre dentate passo HTD / <i>HTD pitch timing bars</i>	35
Piastre dentate / <i>Clamping plates</i>	36
Bussole coniche / <i>Taper bushes</i>	37
Flange per pulegge dentate / <i>Flanges for timing pulleys</i>	38

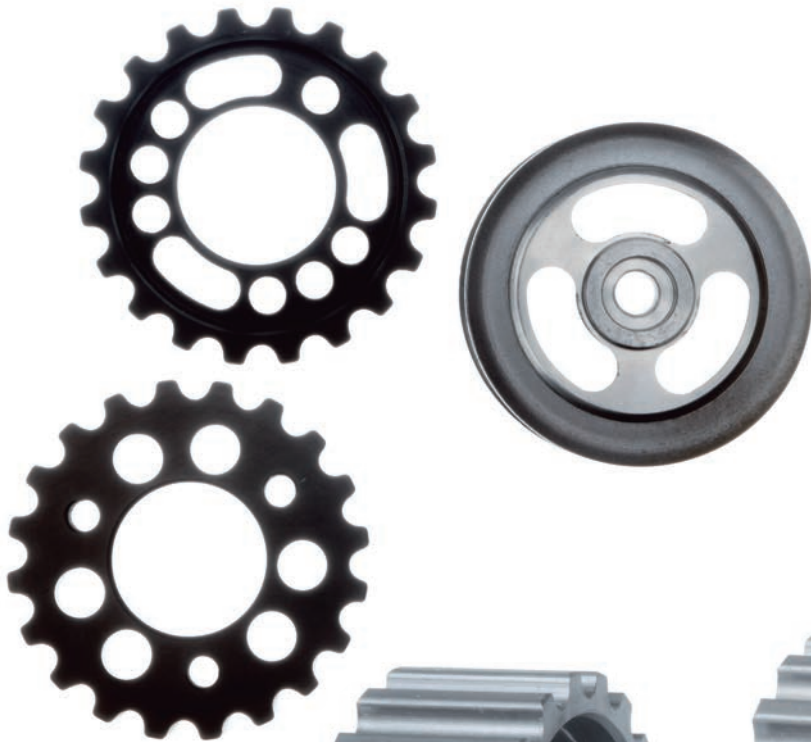
PULEGGE A DISEGNO CUSTOM MADE PULLEYS



Pulegge per ogni tipo di applicazione
in campo automobilistico o industriale.
*Pulleys for all type of applications
in the industrial or automotive field.*

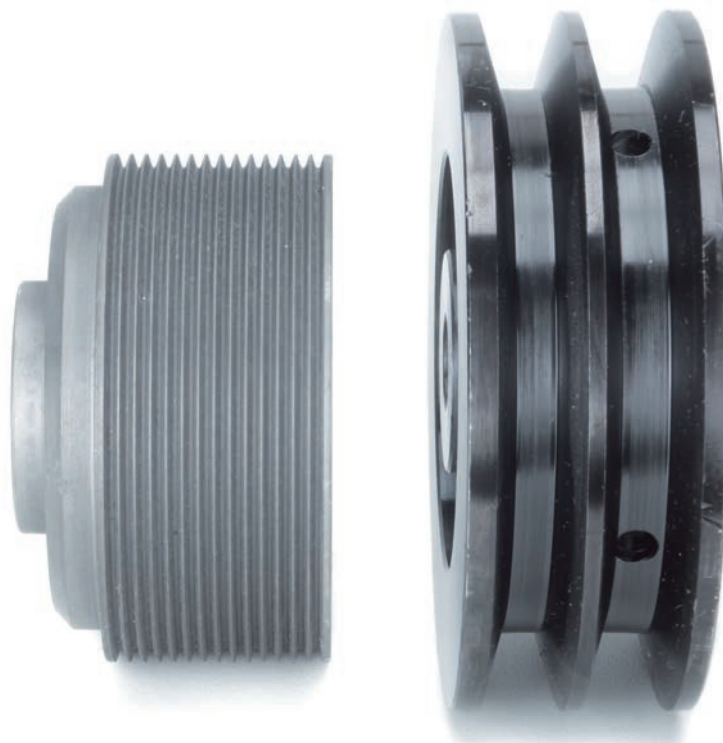
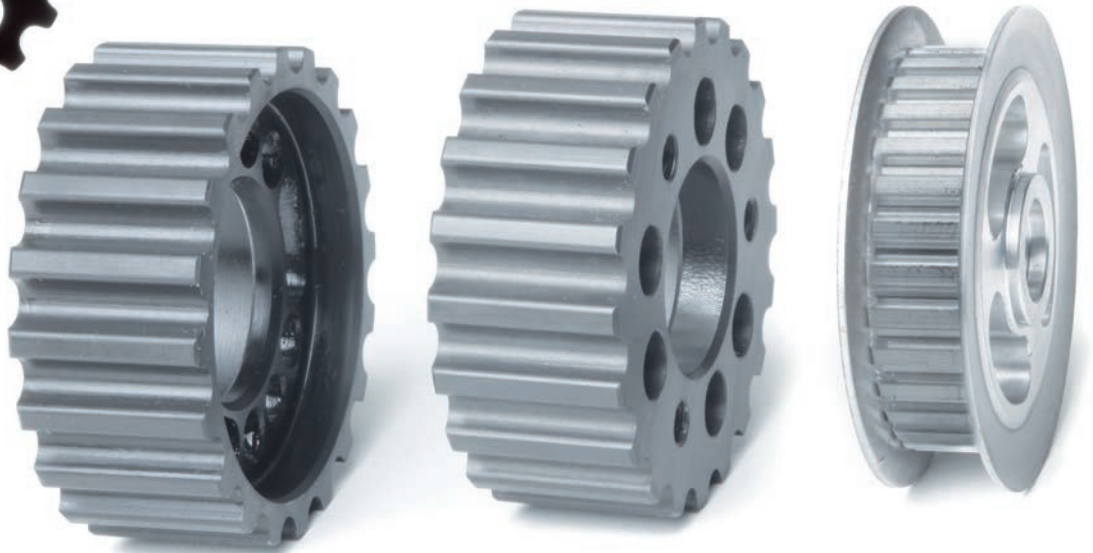


PULEGGE A DISEGNO CUSTOM MADE PULLEYS



Pulegge ricavate da fusioni o laminati,
in materiali metallici o plastici.
Pulegge equilibrate.

*Cast pulleys or from laminated material
in metal or plastic.
Balanced pulleys.*



Pulegge realizzate con
profili standard o speciali.
*Standard or special profile
pulleys.*

PULEGGE DENTATE PASSO METRICO T

T METRIC PITCH TIMING PULLEYS

T2,5 06 (passo 2,5 mm) per cinghia di larghezza 6 mm
T2,5 06 (2,5 mm pitch) for 6 mm width belt

Alluminio/Aluminium	Codice Code	Disegno Drawing	N° Denti Teeth	Dp	De	Df	Dm	B	L
	16T2,5/12-2	1F	12	9,55	9,03	13,0	13	9	16
	16T2,5/14-2	1F	14	11,14	10,62	15,0	15	9	16
	16T2,5/15-2	1F	15	11,94	11,40	15,0	15	9	16
	16T2,5/16-2	1F	16	12,73	12,21	16,0	16	9	16
	16T2,5/18-2	AF	18	14,32	13,80	17,5	10	10	16
	16T2,5/19-2	AF	19	15,12	14,60	20,0	10	10	16
	16T2,5/20-2	AF	20	15,92	15,40	20,0	11	10	16
	16T2,5/22-2	AF	22	17,51	16,99	22,0	11	10	16
	16T2,5/24-2	AF	24	19,10	18,58	22,0	12	10	16
	16T2,5/25-2	AF	25	19,89	19,37	23,0	13	10	16
	16T2,5/26-2	AF	26	20,69	20,17	26,0	14	10	16
	16T2,5/28-2	AF	28	22,28	21,76	26,0	14	10	16
	16T2,5/30-2	AF	30	23,87	23,35	28,0	16	10	16
	16T2,5/32-2	AF	32	25,46	24,95	32,0	16	10	16
	16T2,5/36-2	AF	36	28,65	28,13	36,0	20	10	16
	16T2,5/40-2	AF	40	31,83	31,31	38,0	22	10	16
16T2,5/44-0	A	44	35,01	34,50	-	24	10	16	
16T2,5/48-0	A	48	38,20	37,68	-	26	10	16	
16T2,5/60-0	A	60	47,75	47,23	-	34	10	16	

T5 10 (passo 5 mm) per cinghia di larghezza 10 mm
T5 10 (5 mm pitch) for 10 mm width belt

Alluminio/Aluminium	Codice Code	Disegno Drawing	N° Denti Teeth	Dp	De	Df	Dm	B	L
	21T5/10-2	AF	10	15,92	15,09	19,5	8	15	21
	21T5/12-2	AF	12	19,10	18,27	23,0	11	15	21
	21T5/14-2	AF	14	22,28	21,45	25,0	13	15	21
	21T5/15-2	AF	15	23,87	23,04	28,0	16	15	21
	21T5/16-2	AF	16	25,46	24,64	32,0	18	15	21
	21T5/18-2	AF	18	28,65	27,82	32,0	20	15	21
	21T5/19-2	AF	19	30,24	29,41	36,0	22	15	21
	21T5/20-2	AF	20	31,83	31,00	36,0	23	15	21
	21T5/22-2	AF	22	35,01	34,19	38,0	24	15	21
	21T5/24-2	AF	24	38,20	37,37	42,0	26	15	21
	21T5/25-2	AF	25	39,79	38,96	44,0	26	15	21
	21T5/26-2	AF	26	41,38	40,55	44,0	26	15	21
	21T5/27-2	AF	27	42,97	42,14	48,0	30	15	21
	21T5/28-2	AF	28	44,56	43,73	48,0	32	15	21
	21T5/30-2	AF	30	47,75	46,92	51,0	34	15	21
	21T5/32-2	AF	32	50,93	50,10	54,0	38	15	21
	21T5/36-2	AF	36	57,30	56,47	64,0	38	15	21
	21T5/40-2	AF	40	63,66	62,83	66,5	40	15	21
	21T5/42-2	AF	42	66,85	66,02	70,0	40	15	21
21T5/44-0	A	44	70,03	69,20	-	45	15	21	
21T5/48-0	A	48	76,39	75,57	-	50	15	21	
21T5/60-0	A	60	95,49	94,67	-	65	15	21	

Df e Dm possono variare senza preavviso / Df and Dm can vary without notice

Nelle forme costruttive gli scarichi di alleggerimento possono leggermente variare / During manufacturing, the lightening relief may vary slightly

PULEGGE DENTATE PASSO METRICO T T METRIC PITCH TIMING PULLEYS

T5 16 (passo 5 mm) per cinghia di larghezza 16 mm T5 16 (5 mm pitch) for 16 mm width belt

Alluminio/Aluminium	Codice Code	Disegno Drawing	N° Denti Teeth	Dp	De	Df	Dm	B	L
	27T5/10-2	AF	10	15,92	15,09	19,5	8	21	27
	27T5/12-2	AF	12	19,10	18,27	23,0	11	21	27
	27T5/14-2	AF	14	22,28	21,45	25,0	13	21	27
	27T5/15-2	AF	15	23,87	23,04	28,0	16	21	27
	27T5/16-2	AF	16	25,46	24,64	32,0	18	21	27
	27T5/18-2	AF	18	28,65	27,82	32,0	20	21	27
	27T5/19-2	AF	19	30,24	29,41	36,0	20	21	27
	27T5/20-2	AF	20	31,83	31,00	36,0	23	21	27
	27T5/22-2	AF	22	35,01	34,19	38,0	24	21	27
	27T5/24-2	AF	24	38,20	37,37	42,0	26	21	27
	27T5/25-2	AF	25	39,79	38,96	44,0	26	21	27
	27T5/26-2	AF	26	41,38	40,55	44,0	26	21	27
	27T5/27-2	AF	27	42,97	42,14	48,0	30	21	27
	27T5/28-2	AF	28	44,56	43,73	48,0	32	21	27
	27T5/30-2	AF	30	47,75	46,92	51,0	34	21	27
	27T5/32-2	AF	32	50,93	50,10	54,0	38	21	27
27T5/36-2	AF	36	57,30	56,47	64,0	38	21	27	
27T5/40-2	AF	40	63,66	62,83	66,5	40	21	27	
27T5/42-2	AF	42	66,85	66,02	70,0	40	21	27	
27T5/44-0	A	44	70,03	69,20	-	45	21	27	
27T5/48-0	A	48	76,39	75,57	-	50	21	27	
27T5/60-0	A	60	95,49	94,67	-	65	21	27	

T5 25 (passo 5 mm) per cinghia di larghezza 25 mm T5 25 (5 mm pitch) for 25 mm width belt

Alluminio/Aluminium	Codice Code	Disegno Drawing	N° Denti Teeth	Dp	De	Df	Dm	B	L
	36T5/10-2	AF	10	15,92	15,09	19,5	8	30	36
	36T5/12-2	AF	12	19,10	18,27	23,0	11	30	36
	36T5/14-2	AF	14	22,28	21,45	25,0	13	30	36
	36T5/15-2	AF	15	23,87	23,04	28,0	16	30	36
	36T5/16-2	AF	16	25,46	24,64	32,0	18	30	36
	36T5/18-2	AF	18	28,65	27,82	32,0	20	30	36
	36T5/19-2	AF	19	30,24	29,41	36,0	22	30	36
	36T5/20-2	AF	20	31,83	31,00	36,0	23	30	36
	36T5/22-2	AF	22	35,01	34,19	38,0	24	30	36
	36T5/24-2	AF	24	38,20	37,37	42,0	26	30	36
	36T5/25-2	AF	25	39,79	38,96	44,0	26	30	36
	36T5/26-2	AF	26	41,38	40,55	44,0	26	30	36
	36T5/27-2	AF	27	42,97	42,14	48,0	30	30	36
	36T5/28-2	AF	28	44,56	43,73	48,0	32	30	36
	36T5/30-2	AF	30	47,75	46,92	51,0	34	30	36
	36T5/32-2	AF	32	50,93	50,10	54,0	38	30	36
36T5/36-2	AF	36	57,30	56,47	64,0	38	30	36	
36T5/40-2	AF	40	63,66	62,83	66,5	40	30	36	
36T5/42-2	AF	42	66,85	66,02	70,0	40	30	36	
36T5/44-0	A	44	70,03	69,20	-	45	30	36	
36T5/48-0	A	48	76,39	75,57	-	50	30	36	
36T5/60-0	A	60	95,49	94,67	-	65	30	36	

Df e Dm possono variare senza preavviso / Df and Dm can vary without notice
Nelle forme costruttive gli scarichi di alleggerimento possono leggermente variare / During manufacturing, the lightening relief may vary slightly

PULEGGE DENTATE PASSO METRICO T

T METRIC PITCH TIMING PULLEYS

T10 16 (passo 10 mm) per cinghia di larghezza 16 mm
T10 16 (10 mm pitch) for 16 mm width belt

Alluminio/Aluminium	Codice Code	Disegno Drawing	N° Denti Teeth	Dp	De	Df	Dm	B	L
	31T10/12-2	AF	12	38,20	36,35	42,0	28	21	31
	31T10/14-2	AF	14	44,56	42,71	48,0	32	21	31
	31T10/15-2	AF	15	47,75	45,90	51,0	32	21	31
	31T10/16-2	AF	16	50,93	49,08	54,0	35	21	31
	31T10/18-2	AF	18	57,30	55,45	60,0	40	21	31
	31T10/19-2	AF	19	60,48	58,63	66,0	44	21	31
	31T10/20-2	AF	20	63,66	61,81	66,0	46	21	31
	31T10/22-2	AF	22	70,03	68,18	75,0	52	21	31
	31T10/24-2	AF	24	76,39	74,55	83,0	58	21	31
	31T10/25-2	AF	25	79,58	77,73	83,0	60	21	31
	31T10/26-2	AF	26	82,76	80,91	87,0	60	21	31
	31T10/27-2	AF	27	85,94	84,10	91,0	60	21	31
	31T10/28-2	AF	28	89,13	87,28	93,0	60	21	31
	31T10/30-2	AF	30	95,49	93,65	97,0	60	21	31
	31T10/32-2	AF	32	101,86	100,01	106,0	65	21	31
	31T10/36-2	AF	36	114,59	112,74	119,0	70	21	31
31T10/40-2	AF	40	127,32	125,48	131,0	80	21	31	
31T10/44-0	A	44	140,06	138,21	-	88	21	31	
31T10/48-0	A	48	152,79	150,94	-	95	21	31	
31T10/60-0	A	60	190,99	189,14	-	110	21	31	

T10 25 (passo 10 mm) per cinghia di larghezza 25 mm
T10 25 (10 mm pitch) for 25 mm width belt

Alluminio/Aluminium	Codice Code	Disegno Drawing	N° Denti Teeth	Dp	De	Df	Dm	B	L
	40T10/12-2	AF	12	38,20	36,35	42,0	28	30	40
	40T10/14-2	AF	14	44,56	42,71	48,0	32	30	40
	40T10/15-2	AF	15	47,75	45,90	51,0	32	30	40
	40T10/16-2	AF	16	50,93	49,08	54,0	35	30	40
	40T10/18-2	AF	18	57,30	55,45	60,0	40	30	40
	40T10/19-2	AF	19	60,48	58,63	66,0	44	30	40
	40T10/20-2	AF	20	63,66	61,81	66,0	46	30	40
	40T10/22-2	AF	22	70,03	68,18	75,0	52	30	40
	40T10/24-2	AF	24	76,39	74,55	83,0	58	30	40
	40T10/25-2	AF	25	79,58	77,73	83,0	60	30	40
	40T10/26-2	AF	26	82,76	80,91	87,0	60	30	40
	40T10/27-2	AF	27	85,94	84,10	91,0	60	30	40
	40T10/28-2	AF	28	89,13	87,28	93,0	60	30	40
	40T10/30-2	AF	30	95,49	93,65	97,0	60	30	40
	40T10/32-2	AF	32	101,86	100,01	106,0	65	30	40
	40T10/36-2	AF	36	114,59	112,74	119,0	70	30	40
40T10/40-2	AF	40	127,32	125,48	131,0	80	30	40	
40T10/44-0	A	44	140,06	138,21	-	88	30	40	
40T10/48-0	A	48	152,79	150,94	-	95	30	40	
40T10/60-0	A	60	190,99	189,14	-	110	30	40	

Df e Dm possono variare senza preavviso / *Df and Dm can vary without notice*

Nelle forme costruttive gli scarichi di alleggerimento possono leggermente variare / *During manufacturing, the lightening relief may vary slightly*

PULEGGE DENTATE PASSO METRICO T T METRIC PITCH TIMING PULLEYS

T10 32 (passo 10 mm) per cinghia di larghezza 32 mm T10 32 (10 mm pitch) for 32 mm width belt

Alluminio/Aluminium	Codice Code	Disegno Drawing	N° Denti Teeth	Dp	De	Df	Dm	B	L
	47T10/18-2	AF	18	57,30	55,45	60,0	40	37	47
	47T10/19-2	AF	19	60,48	58,63	66,0	44	37	47
	47T10/20-2	AF	20	63,66	61,81	66,0	46	37	47
	47T10/22-2	AF	22	70,03	68,18	75,0	52	37	47
	47T10/24-2	AF	24	76,39	74,55	83,0	58	37	47
	47T10/25-2	AF	25	79,58	77,73	83,0	60	37	47
	47T10/26-2	AF	26	82,76	80,91	87,0	60	37	47
	47T10/27-2	AF	27	85,94	84,10	91,0	60	37	47
	47T10/28-2	AF	28	89,13	87,28	93,0	60	37	47
	47T10/30-2	AF	30	95,49	93,65	97,0	60	37	47
	47T10/32-2	AF	32	101,86	100,01	106,0	65	37	47
	47T10/36-2	AF	36	114,59	112,74	119,0	70	37	47
	47T10/40-2	AF	40	127,32	125,48	131,0	80	37	47
	47T10/44-0	A	44	140,06	138,21	-	88	37	47
47T10/48-0	A	48	152,79	150,94	-	95	37	47	
47T10/60-0	A	60	190,99	189,14	-	110	37	47	

T10 50 (passo 10 mm) per cinghia di larghezza 50 mm T10 50 (10 mm pitch) for 50 mm width belt

Alluminio/Aluminium	Codice Code	Disegno Drawing	N° Denti Teeth	Dp	De	Df	Dm	B	L
	66T10/18-2	AF	18	57,30	55,45	60,0	40	56	66
	66T10/19-2	AF	19	60,48	58,63	66,0	44	56	66
	66T10/20-2	AF	20	63,66	61,81	66,0	46	56	66
	66T10/22-2	AF	22	70,03	68,18	75,0	52	56	66
	66T10/24-2	AF	24	76,39	74,55	83,0	58	56	66
	66T10/25-2	AF	25	79,58	77,73	83,0	60	56	66
	66T10/26-2	AF	26	82,76	80,91	87,0	60	56	66
	66T10/27-2	AF	27	85,94	84,10	91,0	60	56	66
	66T10/28-2	AF	28	89,13	87,28	93,0	60	56	66
	66T10/30-2	AF	30	95,49	93,65	97,0	60	56	66
	66T10/32-2	AF	32	101,86	100,01	106,0	65	56	66
	66T10/36-2	AF	36	114,59	112,74	119,0	70	56	66
	66T10/40-2	AF	40	127,32	125,48	131,0	80	56	66
	66T10/44-0	A	44	140,06	138,21	-	88	56	66
66T10/48-0	A	48	152,79	150,94	-	95	56	66	
66T10/60-0	A	60	190,99	189,14	-	110	56	66	

Df e Dm possono variare senza preavviso / Df and Dm can vary without notice
Nelle forme costruttive gli scarichi di alleggerimento possono leggermente variare / During manufacturing, the lightening relief may vary slightly

PULEGGE DENTATE PASSO METRICO T

T METRIC PITCH TIMING PULLEYS

T20 32 (passo 20 mm) per cinghia di larghezza 32 mm

T20 32 (20 mm pitch) for 32 mm width belt

Alluminio/Aluminium	Codice Code	Disegno Drawing	N° Denti Teeth	Dp	De	Df	Dm	B	L
	53T20/18-2	AF	18	114,59	111,73	119,0	80	42	53
	53T20/20-2	AF	20	127,32	124,47	138,0	90	42	53
	53T20/22-2	AF	22	140,06	137,20	145,0	90	42	53
	53T20/24-2	AF	24	152,79	149,93	162,0	95	42	53
	53T20/25-2	AF	25	159,15	156,30	168,0	95	42	53
	53T20/30-2	AF	30	190,99	188,13	200,0	110	42	53
	53T20/32-0	A	32	203,72	200,86	-	110	42	53
	53T20/36-0	A	36	229,18	226,33	-	110	42	53
	53T20/40-0	A	40	254,65	251,80	-	110	42	53
53T20/48-0	A	48	305,58	302,73	-	130	42	53	
53T20/60-0	A	60	381,97	379,12	-	130	42	53	

T20 50 (passo 20 mm) per cinghia di larghezza 50 mm

T20 50 (20 mm pitch) for 50 mm width belt

Alluminio/Aluminium	Codice Code	Disegno Drawing	N° Denti Teeth	Dp	De	Df	Dm	B	L
	71T20/18-2	AF	18	114,59	111,73	119,0	80	60	71
	71T20/20-2	AF	20	127,32	124,47	138,0	90	60	71
	71T20/22-2	AF	22	140,06	137,20	145,0	90	60	71
	71T20/24-2	AF	24	152,79	149,93	162,0	95	60	71
	71T20/25-2	AF	25	159,15	156,30	168,0	95	60	71
	71T20/30-2	AF	30	190,99	188,13	200,0	110	60	71
	71T20/32-0	A	32	203,72	200,86	-	110	60	71
	71T20/36-0	A	36	229,18	226,33	-	110	60	71
	71T20/40-0	A	40	254,65	251,80	-	110	60	71
71T20/48-0	A	48	305,58	302,73	-	130	60	71	
71T20/60-0	A	60	381,97	379,12	-	130	60	71	

T20 75 (passo 20 mm) per cinghia di larghezza 75 mm

T20 75 (20 mm pitch) for 75 mm width belt

Alluminio/Aluminium	Codice Code	Disegno Drawing	N° Denti Teeth	Dp	De	Df	Dm	B	L
	106T20/18-2	AF	18	114,59	111,73	119,0	80	85	106
	106T20/20-2	AF	20	127,32	124,47	138,0	90	85	106
	106T20/22-2	AF	22	140,06	137,20	145,0	90	85	106
	106T20/24-2	AF	24	152,79	149,93	162,0	95	85	106
	106T20/25-2	AF	25	159,15	156,30	168,0	95	85	106
	106T20/30-2	AF	30	190,99	188,13	200,0	110	85	106
	106T20/32-0	A	32	203,72	200,86	-	110	85	106
	106T20/36-0	A	36	229,18	226,33	-	110	85	106
	106T20/40-0	A	40	254,65	251,80	-	110	85	106
106T20/48-0	A	48	305,58	302,73	-	130	85	106	
106T20/60-0	A	60	381,97	379,12	-	130	85	106	

T20 100 (passo 20 mm) per cinghia di larghezza 100 mm

T20 100 (20 mm pitch) for 100 mm width belt

Alluminio/Aluminium	Codice Code	Disegno Drawing	N° Denti Teeth	Dp	De	Df	Dm	B	L
	123T20/18-2	AF	18	114,59	111,73	119,0	80	110	123
	123T20/20-2	AF	20	127,32	124,47	138,0	90	110	123
	123T20/22-2	AF	22	140,06	137,20	145,0	90	110	123
	123T20/24-2	AF	24	152,79	149,93	162,0	95	110	123
	123T20/25-2	AF	25	159,15	156,30	168,0	95	110	123
	123T20/30-2	AF	30	190,99	188,13	200,0	110	110	123
	123T20/32-0	A	32	203,72	200,86	-	110	110	123
	123T20/36-0	A	36	229,18	226,33	-	110	110	123
	123T20/40-0	A	40	254,65	251,80	-	110	110	123
123T20/48-0	A	48	305,58	302,73	-	130	110	123	
123T20/60-0	A	60	381,97	379,12	-	130	110	123	

Df e Dm possono variare senza preavviso / Df and Dm can vary without notice

Nelle forme costruttive gli scarichi di alleggerimento possono leggermente variare / During manufacturing, the lightening relief may vary slightly

PULEGGE DENTATE PASSO METRICO AT AT METRIC PITCH TIMING PULLEYS

AT5 10 (passo 5 mm) per cinghia di larghezza 10 mm
AT5 10 (5 mm pitch) for 10 mm width belt

Alluminio/Aluminium	Codice Code	Disegno Drawing	N° Denti Teeth	Dp	De	Df	Dm	B	L
	21AT5/12-2	AF	12	19,10	17,87	23	11	15	21
	21AT5/14-2	AF	14	22,28	21,05	25	14	15	21
	21AT5/15-2	AF	15	23,87	22,64	28	16	15	21
	21AT5/16-2	AF	16	25,46	24,24	32	18	15	21
	21AT5/18-2	AF	18	28,65	27,42	32	20	15	21
	21AT5/19-2	AF	19	30,24	29,01	36	22	15	21
	21AT5/20-2	AF	20	31,83	30,60	36	23	15	21
	21AT5/22-2	AF	22	35,01	33,79	38	24	15	21
	21AT5/24-2	AF	24	38,20	36,97	42	26	15	21
	21AT5/25-2	AF	25	39,79	38,56	44	26	15	21
	21AT5/26-2	AF	26	41,38	40,15	44	26	15	21
	21AT5/27-2	AF	27	42,97	41,74	48	30	15	21
	21AT5/28-2	AF	28	44,56	43,33	48	32	15	21
	21AT5/30-2	AF	30	47,75	46,52	51	34	15	21
	21AT5/32-2	AF	32	50,93	49,70	54	38	15	21
	21AT5/36-2	AF	36	57,30	56,07	64	38	15	21
	21AT5/40-2	AF	40	63,66	62,43	67	40	15	21
	21AT5/42-2	AF	42	66,85	65,62	70	40	15	21
21AT5/44-0	A	44	70,03	68,80	-	45	15	21	
21AT5/48-0	A	48	76,39	75,17	-	50	15	21	
21AT5/60-0	A	60	95,49	94,27	-	65	15	21	

AT5 16 (passo 5 mm) per cinghia di larghezza 16 mm
AT5 16 (5 mm pitch) for 16 mm width belt

Alluminio/Aluminium	Codice Code	Disegno Drawing	N° Denti Teeth	Dp	De	Df	Dm	B	L
	27AT5/12-2	AF	12	19,10	17,87	23	11	21	27
	27AT5/14-2	AF	14	22,28	21,05	25	14	21	27
	27AT5/15-2	AF	15	23,87	22,64	28	16	21	27
	27AT5/16-2	AF	16	25,46	24,24	32	18	21	27
	27AT5/18-2	AF	18	28,65	27,42	32	20	21	27
	27AT5/19-2	AF	19	30,24	29,01	36	22	21	27
	27AT5/20-2	AF	20	31,83	30,60	36	23	21	27
	27AT5/22-2	AF	22	35,01	33,79	38	24	21	27
	27AT5/24-2	AF	24	38,20	36,97	42	26	21	27
	27AT5/25-2	AF	25	39,79	38,56	44	26	21	27
	27AT5/26-2	AF	26	41,38	40,15	44	26	21	27
	27AT5/27-2	AF	27	42,97	41,74	48	30	21	27
	27AT5/28-2	AF	28	44,56	43,33	48	32	21	27
	27AT5/30-2	AF	30	47,75	46,52	51	34	21	27
	27AT5/32-2	AF	32	50,93	49,70	54	36	21	27
	27AT5/36-2	AF	36	57,30	56,07	64	38	21	27
	27AT5/40-2	AF	40	63,66	62,43	67	40	21	27
	27AT5/42-2	AF	42	66,85	65,62	70	40	21	27
	27AT5/44-0	A	44	70,03	68,80	-	45	21	27
27AT5/48-0	A	48	76,39	75,17	-	50	21	27	
27AT5/60-0	A	60	95,49	94,27	-	65	21	27	

Df e Dm possono variare senza preavviso / Df and Dm can vary without notice
Nelle forme costruttive gli scarichi di alleggerimento possono leggermente variare / During manufacturing, the lightening relief may vary slightly

PULEGGE DENTATE PASSO METRICO AT AT METRIC PITCH TIMING PULLEYS

AT5 25 (passo 5 mm) per cinghia di larghezza 25 mm
AT5 25 (5 mm pitch) for 25 mm width belt

Alluminio/Aluminium	Codice Code	Disegno Drawing	N° Denti Teeth	Dp	De	Df	Dm	B	L
	36AT5/12-2	AF	12	19,10	17,87	23	11	30	36
	36AT5/14-2	AF	14	22,28	21,05	25	14	30	36
	36AT5/15-2	AF	15	23,87	22,64	28	16	30	36
	36AT5/16-2	AF	16	25,46	24,24	32	18	30	36
	36AT5/18-2	AF	18	28,65	27,42	32	20	30	36
	36AT5/19-2	AF	19	30,24	29,01	36	22	30	36
	36AT5/20-2	AF	20	31,83	30,60	36	23	30	36
	36AT5/22-2	AF	22	35,01	33,79	38	24	30	36
	36AT5/24-2	AF	24	38,20	36,97	42	26	30	36
	36AT5/25-2	AF	25	39,79	38,56	44	26	30	36
	36AT5/26-2	AF	26	41,38	40,15	44	26	30	36
	36AT5/27-2	AF	27	42,97	41,74	48	30	30	36
	36AT5/28-2	AF	28	44,56	43,33	48	32	30	36
	36AT5/30-2	AF	30	47,75	46,52	51	34	30	36
	36AT5/32-2	AF	32	50,93	49,70	54	36	30	36
	36AT5/36-2	AF	36	57,30	56,07	64	38	30	36
36AT5/40-2	AF	40	63,66	62,43	67	40	30	36	
36AT5/42-2	AF	42	66,85	65,62	70	40	30	36	
36AT5/44-0	A	44	70,03	68,80	-	45	30	36	
36AT5/48-0	A	48	76,39	75,17	-	50	30	36	
36AT5/60-0	A	60	95,49	94,27	-	65	30	36	

AT10 16 (passo 10 mm) per cinghia di larghezza 16 mm
AT10 16 (10 mm pitch) for 16 mm width belt

Alluminio/Aluminium	Codice Code	Disegno Drawing	N° Denti Teeth	Dp	De	Df	Dm	B	L
	31AT10/15-2	AF	15	47,75	45,90	51,0	32	21	31
	31AT10/16-2	AF	16	50,93	49,08	54,0	35	21	31
	31AT10/18-2	AF	18	57,30	55,45	60,0	40	21	31
	31AT10/19-2	AF	19	60,48	58,63	66,0	44	21	31
	31AT10/20-2	AF	20	63,66	61,81	66,0	46	21	31
	31AT10/22-2	AF	22	70,03	68,18	75,0	52	21	31
	31AT10/24-2	AF	24	76,39	74,55	83,0	58	21	31
	31AT10/25-2	AF	25	79,58	77,73	83,0	60	21	31
	31AT10/26-2	AF	26	82,76	80,91	87,0	60	21	31
	31AT10/27-2	AF	27	85,94	84,10	91,0	60	21	31
	31AT10/28-2	AF	28	89,13	87,28	93,0	60	21	31
	31AT10/30-2	AF	30	95,49	93,65	97,0	60	21	31
	31AT10/32-2	AF	32	101,86	100,01	106,0	65	21	31
	31AT10/36-2	AF	36	114,59	112,74	119,0	70	21	31
	31AT10/40-2	AF	40	127,32	125,48	131,0	80	21	31
	31AT10/44-0	A	44	140,06	138,21	-	88	21	31
31AT10/48-0	A	48	152,79	150,94	-	95	21	31	
31AT10/60-0	A	60	190,99	189,14	-	110	21	31	

Df e Dm possono variare senza preavviso / Df and Dm can vary without notice

Nelle forme costruttive gli scarichi di alleggerimento possono leggermente variare / During manufacturing, the lightening relief may vary slightly

PULEGGE DENTATE PASSO METRICO AT AT METRIC PITCH TIMING PULLEYS

AT10 25 (passo 10 mm) per cinghia di larghezza 25 mm AT10 25 (10 mm pitch) for 25 mm width belt

Alluminio/Aluminium	Codice Code	Disegno Drawing	N° Denti Teeth	Dp	De	Df	Dm	B	L
	40AT10/15-2	AF	15	47,75	45,90	45,90	31	30	40
	40AT10/16-2	AF	16	50,93	49,08	49,08	35	30	40
	40AT10/18-2	AF	18	57,30	55,45	55,45	40	30	40
	40AT10/19-2	AF	19	60,48	58,63	58,63	44	30	40
	40AT10/20-2	AF	20	63,66	61,81	61,81	46	30	40
	40AT10/22-2	AF	22	70,03	68,18	68,18	52	30	40
	40AT10/24-2	AF	24	76,39	74,55	74,55	58	30	40
	40AT10/25-2	AF	25	79,58	77,73	77,73	60	30	40
	40AT10/26-2	AF	26	82,76	80,91	80,91	60	30	40
	40AT10/27-2	AF	27	85,94	84,10	84,10	60	30	40
	40AT10/28-2	AF	28	89,13	87,28	87,28	60	30	40
	40AT10/30-2	AF	30	95,49	93,65	93,65	60	30	40
	40AT10/32-2	AF	32	101,86	100,01	100,01	65	30	40
	40AT10/36-2	AF	36	114,59	112,74	112,74	70	30	40
	40AT10/40-2	AF	40	127,32	125,48	125,48	80	30	40
40AT10/44-0	A	44	140,06	138,21	138,21	88	30	40	
40AT10/48-0	A	48	152,79	150,94	150,94	95	30	40	
40AT10/60-0	A	60	190,99	189,14	189,14	110	30	40	

AT10 32 (passo 10 mm) per cinghia di larghezza 32 mm AT10 32 (10 mm pitch) for 32 mm width belt

Alluminio/Aluminium	Codice Code	Disegno Drawing	N° Denti Teeth	Dp	De	Df	Dm	B	L
	47AT10/18-2	AF	18	57,30	55,45	60,0	40	37	47
	47AT10/19-2	AF	19	60,48	58,63	66,0	44	37	47
	47AT10/20-2	AF	20	63,66	61,81	66,0	46	37	47
	47AT10/22-2	AF	22	70,03	68,18	75,0	52	37	47
	47AT10/24-2	AF	24	76,39	74,55	83,0	58	37	47
	47AT10/25-2	AF	25	79,58	77,73	83,0	60	37	47
	47AT10/26-2	AF	26	82,76	80,91	87,0	60	37	47
	47AT10/27-2	AF	27	85,94	84,10	91,0	60	37	47
	47AT10/28-2	AF	28	89,13	87,28	93,0	60	37	47
	47AT10/30-2	AF	30	95,49	93,65	97,0	60	37	47
	47AT10/32-2	AF	32	101,86	100,01	106,0	65	37	47
	47AT10/36-2	AF	36	114,59	112,74	119,0	70	37	47
	47AT10/40-2	AF	40	127,32	125,48	131,0	80	37	47
	47AT10/44-0	A	44	140,06	138,21	-	88	37	47
	47AT10/48-0	A	48	152,79	150,94	-	95	37	47
47AT10/60-0	A	60	190,99	189,14	-	110	37	47	

AT10 50 (passo 10 mm) per cinghia di larghezza 50 mm AT10 50 (10 mm pitch) for 50 mm width belt

Alluminio/Aluminium	Codice Code	Disegno Drawing	N° Denti Teeth	Dp	De	Df	Dm	B	L
	66AT10/18-2	AF	18	57,30	55,45	60,0	40	56	66
	66AT10/19-2	AF	19	60,48	58,63	66,0	44	56	66
	66AT10/20-2	AF	20	63,66	61,81	66,0	46	56	66
	66AT10/22-2	AF	22	70,03	68,18	75,0	52	56	66
	66AT10/24-2	AF	24	76,39	74,55	83,0	58	56	66
	66AT10/25-2	AF	25	79,58	77,73	83,0	60	56	66
	66AT10/26-2	AF	26	82,76	80,91	87,0	60	56	66
	66AT10/27-2	AF	27	85,94	84,10	91,0	60	56	66
	66AT10/28-2	AF	28	89,13	87,28	93,0	60	56	66
	66AT10/30-2	AF	30	95,49	93,65	97,0	60	56	66
	66AT10/32-2	AF	32	101,86	100,01	106,0	65	56	66
	66AT10/36-2	AF	36	114,59	112,74	119,0	70	56	66
	66AT10/40-2	AF	40	127,32	125,48	131,0	80	56	66
	66AT10/44-0	A	44	140,06	138,21	-	88	56	66
	66AT10/48-0	A	48	152,79	150,94	-	95	56	66
66AT10/60-0	A	60	190,99	189,14	-	110	56	66	

Df e Dm possono variare senza preavviso / Df and Dm can vary without notice
Nelle forme costruttive gli scarichi di alleggerimento possono leggermente variare / During manufacturing, the lightening relief may vary slightly

PULEGGE DENTATE PASSO METRICO AT AT METRIC PITCH TIMING PULLEYS

AT20 32 (passo 20 mm) per cinghia di larghezza 32 mm AT20 32 (20 mm pitch) for 32 mm width belt

Alluminio/Aluminium	Codice Code	Disegno Drawing	N° Denti Teeth	Dp	De	Df	Dm	B	L
	53AT20/18-2	AF	18	114,59	111,73	119,0	80	42	53
	53AT20/20-2	AF	20	127,32	124,47	138,0	90	42	53
	53AT20/22-2	AF	22	140,06	137,20	145,0	90	42	53
	53AT20/24-2	AF	24	152,79	149,93	162,0	95	42	53
	53AT20/25-2	AF	25	159,15	156,30	168,0	95	42	53
	53AT20/30-2	AF	30	190,99	188,13	200,0	110	42	53
	53AT20/32-0	A	32	203,72	200,86	-	110	42	53
	53AT20/36-0	A	36	229,18	226,33	-	110	42	53
	53AT20/40-0	A	40	254,65	251,80	-	110	42	53
53AT20/48-0	A	48	305,58	302,73	-	130	42	53	
53AT20/60-0	A	60	381,97	379,12	-	130	42	53	

AT20 50 (passo 20 mm) per cinghia di larghezza 50 mm AT20 50 (20 mm pitch) for 50 mm width belt

Alluminio/Aluminium	Codice Code	Disegno Drawing	N° Denti Teeth	Dp	De	Df	Dm	B	L
	71AT20/18-2	AF	18	114,59	111,73	119,0	80	60	71
	71AT20/20-2	AF	20	127,32	124,47	138,0	90	60	71
	71AT20/22-2	AF	22	140,06	137,20	145,0	90	60	71
	71AT20/24-2	AF	24	152,79	149,93	162,0	95	60	71
	71AT20/25-2	AF	25	159,15	156,30	168,0	95	60	71
	71AT20/30-2	AF	30	190,99	188,13	200,0	110	60	71
	71AT20/32-0	A	32	203,72	200,86	-	110	60	71
	71AT20/36-0	A	36	229,18	226,33	-	110	60	71
	71AT20/40-0	A	40	254,65	251,80	-	110	60	71
71AT20/48-0	A	48	305,58	302,73	-	130	60	71	
71AT20/60-0	A	60	381,97	379,12	-	130	60	71	

AT20 75 (passo 20 mm) per cinghia di larghezza 75 mm AT20 75 (20 mm pitch) for 75 mm width belt

Alluminio/Aluminium	Codice Code	Disegno Drawing	N° Denti Teeth	Dp	De	Df	Dm	B	L
	106AT20/18-2	AF	18	114,59	111,73	119,0	80	85	106
	106AT20/20-2	AF	20	127,32	124,47	138,0	90	85	106
	106AT20/22-2	AF	22	140,06	137,20	145,0	90	85	106
	106AT20/24-2	AF	24	152,79	149,93	162,0	95	85	106
	106AT20/25-2	AF	25	159,15	156,30	168,0	95	85	106
	106AT20/30-2	AF	30	190,99	188,13	200,0	110	85	106
	106AT20/32-0	A	32	203,72	200,86	-	110	85	106
	106AT20/36-0	A	36	229,18	226,33	-	110	85	106
	106AT20/40-0	A	40	254,65	251,80	-	110	85	106
106AT20/48-0	A	48	305,58	302,73	-	130	85	106	
106AT20/60-0	A	60	381,97	379,12	-	130	85	106	

AT20 100 (passo 20 mm) per cinghia di larghezza 100 mm AT20 100 (20 mm pitch) for 100 mm width belt

Alluminio/Aluminium	Codice Code	Disegno Drawing	N° Denti Teeth	Dp	De	Df	Dm	B	L
	123AT20/18-2	AF	18	114,59	111,73	119,0	80	110	123
	123AT20/20-2	AF	20	127,32	124,47	138,0	90	110	123
	123AT20/22-2	AF	22	140,06	137,20	145,0	90	110	123
	123AT20/24-2	AF	24	152,79	149,93	162,0	95	110	123
	123AT20/25-2	AF	25	159,15	156,30	168,0	95	110	123
	123AT20/30-2	AF	30	190,99	188,13	200,0	110	110	123
	123AT20/32-0	A	32	203,72	200,86	-	110	110	123
	123AT20/36-0	A	36	229,18	226,33	-	110	110	123
	123AT20/40-0	A	40	254,65	251,80	-	110	110	123
123AT20/48-0	A	48	305,58	302,73	-	130	110	123	
123AT20/60-0	A	60	381,97	379,12	-	130	110	123	

Df e Dm possono variare senza preavviso / Df and Dm can vary without notice

Nelle forme costruttive gli scarichi di alleggerimento possono leggermente variare / During manufacturing, the lightening relief may vary slightly

PULEGGE DENTATE PASSO IN POLLICI IMPERIAL PITCH TIMING PULLEYS

MXL 025 (passo 0,08" - 2,032 mm) per cinghia di larghezza 0,25" - 6,35 mm
MXL 025 (0,08" pitch - 2,032 mm) for 0,25" - 6,35 mm width belt

Alluminio/Aluminium	Codice Code	Disegno Drawing	N° Denti Teeth	Dp	De	Df	Dm	B	L
	16 MXL 025 F	1F	16	10,35	9,84	15,0	15	8,5	16
	18 MXL 025 F	1F	18	11,64	11,13	16,0	16	8,5	16
	20 MXL 025 F	1F	20	12,94	12,43	16,0	16	8,5	16
	22 MXL 025 F	AF	22	14,23	13,72	17,5	10	11,0	16
	24 MXL 025 F	AF	24	15,52	15,01	20,0	10	11,0	16
	28 MXL 025 F	AF	28	18,11	17,60	25,0	11	11,0	16
	30 MXL 025 F	AF	30	19,40	18,89	25,0	12	11,0	16
	32 MXL 025 F	AF	32	20,70	20,19	26,0	14	11,0	16
	36 MXL 025 F	AF	36	23,29	22,78	28,0	16	11,0	16
	40 MXL 025 F	AF	40	25,87	25,36	32,0	18	11,0	16
	42 MXL 025 F	AF	42	27,17	26,66	32,0	18	11,0	16
	44 MXL 025 F	AF	44	28,46	27,95	36,0	18	11,0	16
48 MXL 025	A	48	31,05	30,54	-	20	11,0	16	
60 MXL 025	A	60	38,81	38,30	-	24	11,0	16	
72 MXL 025	A	72	46,57	46,06	-	25	11,0	16	

XL 037 (passo 1/5" - 5,08 mm) per cinghia di larghezza 0,37" - 9,53 mm
XL 037 (1/5" pitch - 5,08 mm) for 0,37" - 9,53 mm width belt

Alluminio/Aluminium	Codice Code	Disegno Drawing	N° Denti Teeth	Dp	De	Df	Dm	B	L
	10 XL 037 F	AF	10	16,17	15,66	23,0	9,5	14,3	20
	11 XL 037 F	AF	11	17,79	17,28	23,0	9,5	14,3	20
	12 XL 037 F	AF	12	19,40	18,89	25,0	10,0	14,3	20
	13 XL 037 F	AF	13	21,02	20,51	25,0	10,0	14,3	20
	14 XL 037 F	AF	14	22,64	22,13	28,0	15,0	14,3	20
	15 XL 037 F	AF	15	24,26	23,75	28,0	15,0	14,3	20
	16 XL 037 F	AF	16	25,87	25,36	32,0	16,0	14,3	20
	17 XL 037 F	AF	17	27,49	26,98	32,0	20,0	14,3	20
	18 XL 037 F	AF	18	29,11	28,60	35,0	20,0	14,3	20
	19 XL 037 F	AF	19	30,72	30,21	35,0	20,0	14,3	22
	20 XL 037 F	AF	20	32,34	31,83	38,0	24,0	14,3	22
	21 XL 037 F	AF	21	33,96	33,45	38,0	24,0	14,3	22
	22 XL 037 F	AF	22	35,57	35,07	41,0	25,0	14,3	22
	24 XL 037 F	AF	24	38,81	38,30	44,0	30,0	14,3	22
	26 XL 037 F	AF	26	42,04	41,53	48,0	30,0	14,3	22
	27 XL 037 F	AF	27	43,67	43,16	48,0	34,0	14,3	22
	28 XL 037 F	AF	28	45,28	44,77	51,0	34,0	14,3	22
	29 XL 037 F	AF	29	46,89	46,38	51,0	34,0	14,3	22
	30 XL 037 F	AF	30	48,51	48,00	54,0	38,0	14,3	22
	32 XL 037 F	AF	32	51,74	51,23	57,0	38,0	14,3	25
	34 XL 037	A	34	54,98	54,47	-	45,0	14,3	25
	35 XL 037	A	35	56,60	56,09	-	45,0	14,3	25
	36 XL 037	A	36	58,21	57,70	-	45,0	14,3	25
	38 XL 037	A	38	61,45	60,94	-	45,0	14,3	25
	39 XL 037	A	39	63,06	62,55	-	45,0	14,3	25
	40 XL 037	A	40	64,68	64,17	-	45,0	14,3	25
	41 XL 037	A	41	66,30	65,79	-	45,0	14,3	25
	42 XL 037	A	42	67,91	67,40	-	45,0	14,3	25
	43 XL 037	A	43	69,53	69,02	-	45,0	14,3	25
	44 XL 037	A	44	71,15	70,64	-	45,0	14,3	25
	45 XL 037	B	45	72,77	72,26	-	45,0	14,3	25
	46 XL 037	B	46	74,38	73,87	-	45,0	14,3	25
	47 XL 037	B	47	76,00	75,49	-	45,0	14,3	25
	48 XL 037	B	48	77,62	77,11	-	45,0	14,3	25
	49 XL 037	B	49	79,23	78,72	-	45,0	14,3	25
	52 XL 037	B	52	84,08	83,57	-	45,0	14,3	25
	56 XL 037	B	56	90,55	90,04	-	45,0	14,3	25
	60 XL 037	B	60	97,02	96,51	-	45,0	14,3	25
	68 XL 037	B	68	109,96	109,45	-	45,0	14,3	25
	70 XL 037	B	70	113,19	112,68	-	45,0	14,3	25
	72 XL 037	B	72	116,43	115,92	-	45,0	14,3	25

Df e Dm possono variare senza preavviso / Df and Dm can vary without notice
Nelle forme costruttive gli scarichi di alleggerimento possono leggermente variare / During manufacturing, the lightening relief may vary slightly

PULEGGE DENTATE PASSO IN POLLICI

IMPERIAL PITCH TIMING PULLEYS

L 050 (passo 3/5" - 9,525 mm) per cinghia di larghezza 0,50" - 12,7 mm
 L 050 (3/5" pitch - 9,525 mm) for 0,50" - 12,7 mm width belt

	Codice Code	Disegno Drawing	N° Denti Teeth	Dp	De	Df	Dm	B	L
Acciaio/Steel	10 L 050 F	AF	10	30,32	29,56	37,0	20	19	28
	11 L 050 F	AF	11	33,35	32,59	37,0	22	19	30
	12 L 050 F	AF	12	36,38	35,62	43,0	24	19	30
	13 L 050 F	AF	13	39,41	38,65	44,0	28	19	30
	14 L 050 F	AF	14	42,45	41,69	48,0	28	19	30
	15 L 050 F	AF	15	45,48	44,72	51,0	34	19	30
	16 L 050 F	AF	16	48,51	47,75	54,0	36	19	32
	17 L 050 F	AF	17	51,54	50,78	57,0	36	19	32
	18 L 050 F	AF	18	54,57	53,81	60,0	40	19	32
	19 L 050 F	AF	19	57,61	56,85	64,0	40	19	32
	20 L 050 F	AF	20	60,64	59,88	66,5	40	19	32
	21 L 050 F	AF	21	63,67	62,91	70,0	45	19	32
	22 L 050 F	AF	22	66,70	65,94	75,0	45	19	32
	23 L 050 F	AF	23	69,73	68,97	79,0	55	19	32
	24 L 050 F	AF	24	72,77	72,01	79,0	55	19	32
	25 L 050 F	AF	25	75,80	75,04	82,5	58	19	32
	26 L 050 F	AF	26	78,83	78,07	86,0	58	19	32
	27 L 050 F	AF	27	81,86	81,10	86,0	58	19	32
	28 L 050 F	AF	28	84,89	84,13	91,0	58	19	32
	29 L 050 F	AF	29	87,93	87,17	94,0	58	19	32
	30 L 050 F	AF	30	90,96	90,20	97,0	70	19	32
	32 L 050 F	AF	32	97,02	96,26	102,0	70	19	32
	33 L 050 F	AF	33	100,05	99,29	106,0	70	19	32
	34 L 050 F	AF	34	103,08	102,32	112,0	70	19	32
	35 L 050 F	AF	35	106,12	105,36	112,0	70	19	32
	36 L 050 F	AF	36	109,15	108,39	115,0	70	19	32
	40 L 050 F	BF	40	121,28	120,52	128,0	70	19	32
	41 L 050 F	BF	41	124,31	123,55	135,0	70	19	32
42 L 050 F	BF	42	127,34	126,58	135,0	70	19	32	
44 L 050 F	BF	44	133,40	132,64	142,0	70	19	32	
45 L 050 F	BF	45	136,44	135,68	142,0	70	19	32	
47 L 050 F	BF	47	142,50	141,74	150,0	70	19	32	
48 L 050 F	BF	48	145,53	144,76	150,0	70	19	32	
Ghisa/Cast Iron	50 L 050	B	50	151,60	150,84	-	70	19	32
	52 L 050	B	52	157,66	156,90	-	70	19	32
	56 L 050	B	56	169,79	169,03	-	70	19	32
	57 L 050	B	57	172,82	172,06	-	70	19	32
	60 L 050	B	60	181,91	181,15	-	75	19	42
	72 L 050	C	72	218,30	217,54	-	75	19	42
	84 L 050	C	84	254,68	253,92	-	75	19	42
	90 L 050	C	90	272,87	272,11	-	75	19	42

Df e Dm possono variare senza preavviso / Df and Dm can vary without notice

Nelle forme costruttive gli scarichi di alleggerimento possono leggermente variare / During manufacturing, the lightening relief may vary slightly

PULEGGE DENTATE PASSO IN POLLICI IMPERIAL PITCH TIMING PULLEYS

L 075 (passo 3/5" - 9,525 mm) per cinghia di larghezza 0,75" - 19,05 mm
L 075 (3/5" pitch - 9,525 mm) for 0,75" - 19,05 mm width belt

	Codice Code	Disegno Drawing	N° Denti Teeth	Dp	De	Df	Dm	B	L
Acciaio/Steel	10 L 075 F	AF	10	30,32	29,56	37,0	20	25,4	38
	11 L 075 F	AF	11	33,35	32,59	37,0	22	25,4	38
	12 L 075 F	AF	12	36,38	35,62	43,0	24	25,4	38
	13 L 075 F	AF	13	39,41	38,65	44,0	28	25,4	38
	14 L 075 F	AF	14	42,45	41,69	48,0	28	25,4	38
	15 L 075 F	AF	15	45,48	44,72	51,0	34	25,4	38
	16 L 075 F	AF	16	48,51	47,75	54,0	36	25,4	38
	17 L 075 F	AF	17	51,54	50,78	57,0	36	25,4	38
	18 L 075 F	AF	18	54,57	53,81	60,0	40	25,4	38
	19 L 075 F	AF	19	57,61	56,85	64,0	40	25,4	38
	20 L 075 F	AF	20	60,64	59,88	66,5	40	25,4	38
	21 L 075 F	AF	21	63,67	62,91	70,0	45	25,4	38
	22 L 075 F	AF	22	66,70	65,94	75,0	45	25,4	38
	23 L 075 F	AF	23	69,73	68,97	79,0	55	25,4	38
	24 L 075 F	AF	24	72,77	72,01	79,0	55	25,4	38
	25 L 075 F	AF	25	75,80	75,04	82,5	58	25,4	38
	26 L 075 F	AF	26	78,83	78,07	86,0	58	25,4	38
	27 L 075 F	AF	27	81,86	81,10	86,0	58	25,4	38
	28 L 075 F	AF	28	84,89	84,13	91,0	58	25,4	38
	29 L 075 F	AF	29	87,93	87,17	94,0	58	25,4	38
	30 L 075 F	AF	30	90,96	90,20	97,0	70	25,4	38
	32 L 075 F	AF	32	97,02	96,26	102,0	70	25,4	38
	33 L 075 F	AF	33	100,05	99,29	106,0	70	25,4	38
	34 L 075 F	AF	34	103,08	102,32	112,0	70	25,4	38
	35 L 075 F	AF	35	106,12	105,36	112,0	70	25,4	38
	36 L 075 F	AF	36	109,15	108,39	115,0	70	25,4	38
	40 L 075 F	BF	40	121,28	120,52	128,0	70	25,4	38
	41 L 075 F	BF	41	124,31	123,55	135,0	70	25,4	38
	42 L 075 F	BF	42	127,34	126,58	135,0	70	25,4	38
	44 L 075 F	BF	44	133,40	132,64	142,0	70	25,4	38
45 L 075 F	BF	45	136,44	135,68	142,0	70	25,4	38	
47 L 075 F	BF	47	142,50	141,74	150,0	70	25,4	38	
48 L 075 F	BF	48	145,53	144,76	150,0	70	25,4	38	
Ghisa/Cast Iron	50 L 075	B	50	151,60	150,84	-	70	25,4	38
	52 L 075	B	52	157,66	156,90	-	70	25,4	38
	56 L 075	B	56	169,79	169,03	-	70	25,4	38
	57 L 075	B	57	172,82	172,06	-	70	25,4	38
	60 L 075	B	60	181,91	181,15	-	75	25,4	45
	72 L 075	C	72	218,30	217,54	-	75	25,4	45
	84 L 075	C	84	254,68	253,92	-	75	25,4	45
	90 L 075	C	90	272,87	272,11	-	75	25,4	45

Df e Dm possono variare senza preavviso / Df and Dm can vary without notice
Nelle forme costruttive gli scarichi di alleggerimento possono leggermente variare / During manufacturing, the lightening relief may vary slightly

PULEGGE DENTATE PASSO IN POLLICI IMPERIAL PITCH TIMING PULLEYS

L 100 (passo 3/5" - 9,525 mm) per cinghia di larghezza 1,00" - 25,4 mm
L 100 (3/5" pitch - 9,525 mm) for 1,00" - 25,4 mm width belt

	Codice Code	Disegno Drawing	N° Denti Teeth	Dp	De	Df	Dm	B	L
Acciaio/Steel	10 L 100 F	AF	10	30,32	29,56	37,0	20	31,8	45
	11 L 100 F	AF	11	33,35	32,59	37,0	22	31,8	45
	12 L 100 F	AF	12	36,38	35,62	43,0	24	31,8	45
	13 L 100 F	AF	13	39,41	38,65	44,0	28	31,8	45
	14 L 100 F	AF	14	42,45	41,69	48,0	28	31,8	45
	15 L 100 F	AF	15	45,48	44,72	51,0	34	31,8	45
	16 L 100 F	AF	16	48,51	47,75	54,0	36	31,8	45
	17 L 100 F	AF	17	51,54	50,78	57,0	36	31,8	45
	18 L 100 F	AF	18	54,57	53,81	60,0	40	31,8	45
	19 L 100 F	AF	19	57,61	56,85	64,0	40	31,8	45
	20 L 100 F	AF	20	60,64	59,88	66,5	40	31,8	45
	21 L 100 F	AF	21	63,67	62,91	70,0	45	31,8	45
	22 L 100 F	AF	22	66,70	65,94	75,0	45	31,8	45
	23 L 100 F	AF	23	69,73	68,97	79,0	55	31,8	45
	24 L 100 F	AF	24	72,77	72,01	79,0	55	31,8	45
	25 L 100 F	AF	25	75,80	75,04	82,5	58	31,8	45
	26 L 100 F	AF	26	78,83	78,07	86,0	58	31,8	45
	27 L 100 F	AF	27	81,86	81,10	86,0	58	31,8	45
	28 L 100 F	AF	28	84,89	84,13	91,0	58	31,8	45
	29 L 100 F	AF	29	87,93	87,17	94,0	58	31,8	45
	30 L 100 F	AF	30	90,96	90,20	97,0	70	31,8	45
	32 L 100 F	AF	32	97,02	96,26	102,0	70	31,8	45
	33 L 100 F	AF	33	100,05	99,29	106,0	70	31,8	45
	34 L 100 F	AF	34	103,08	102,32	112,0	70	31,8	45
	35 L 100 F	AF	35	106,12	105,36	112,0	70	31,8	45
	36 L 100 F	AF	36	109,15	108,39	115,0	70	31,8	45
	40 L 100 F	BF	40	121,28	120,52	128,0	70	31,8	45
	41 L 100 F	BF	41	124,31	123,55	135,0	70	31,8	45
	42 L 100 F	BF	42	127,34	126,58	135,0	70	31,8	45
	44 L 100 F	BF	44	133,40	132,64	142,0	70	31,8	45
45 L 100 F	BF	45	136,44	135,68	142,0	70	31,8	45	
47 L 100 F	BF	47	142,50	141,74	150,0	70	31,8	45	
48 L 100 F	BF	48	145,53	144,76	150,0	70	31,8	45	
Ghisa/Cast Iron	50 L 100	B	50	151,60	150,84	-	70	31,8	45
	52 L 100	B	52	157,66	156,90	-	70	31,8	45
	56 L 100	B	56	169,79	169,03	-	70	31,8	45
	57 L 100	B	57	172,82	172,06	-	70	31,8	45
	60 L 100	B	60	181,91	181,15	-	75	31,8	50
	72 L 100	C	72	218,30	217,54	-	75	31,8	50
	84 L 100	C	84	254,68	253,92	-	75	31,8	50
	90 L 100	C	90	272,87	272,11	-	75	31,8	50

Df e Dm possono variare senza preavviso / Df and Dm can vary without notice

Nelle forme costruttive gli scarichi di alleggerimento possono leggermente variare / During manufacturing, the lightening relief may vary slightly

PULEGGE DENTATE PASSO IN POLLICI IMPERIAL PITCH TIMING PULLEYS

H 075 (passo 1/2" - 12,7 mm) per cinghia di larghezza 0,75" - 19,05 mm
H 075 (1/2" pitch - 12,7 mm) for 0,75" - 19,05 mm width belt

	Codice Code	Disegno Drawing	N° Denti Teeth	Dp	De	Df	Dm	B	L
Acciaio/Steel	14 H 075 F	AF	14	56,60	55,23	64,0	40	26,4	40
	15 H 075 F	AF	15	60,64	59,27	66,5	45	26,4	40
	16 H 075 F	AF	16	64,68	63,31	70,0	45	26,4	40
	17 H 075 F	AF	17	68,72	67,35	75,0	45	26,4	40
	18 H 075 F	AF	18	72,77	71,40	79,0	55	26,4	40
	19 H 075 F	AF	19	76,81	75,44	82,5	60	26,4	40
	20 H 075 F	AF	20	80,85	79,48	87,0	62	26,4	40
	21 H 075 F	AF	21	84,89	83,52	91,0	65	26,4	40
	22 H 075 F	AF	22	88,94	87,57	94,0	68	26,4	40
	23 H 075 F	AF	23	92,98	91,61	97,0	72	26,4	40
	24 H 075 F	AF	24	97,02	95,65	102,0	72	26,4	40
	25 H 075 F	AF	25	101,06	99,69	106,0	72	26,4	40
	26 H 075 F	AF	26	105,11	103,74	112,0	80	26,4	40
	27 H 075 F	AF	27	109,15	107,78	115,0	80	26,4	40
	28 H 075 F	AF	28	113,19	111,82	120,0	80	26,4	40
	29 H 075 F	AF	29	117,23	115,86	120,0	80	26,4	40
	30 H 075 F	AF	30	121,28	119,91	128,0	80	26,4	40
	32 H 075 F	AF	32	129,36	127,99	135,0	80	26,4	40
	33 H 075 F	AF	33	133,40	132,03	142,0	80	26,4	40
	34 H 075 F	AF	34	137,45	136,08	142,0	80	26,4	40
35 H 075 F	AF	35	141,49	140,12	150,0	80	26,4	40	
36 H 075 F	AF	36	145,53	144,16	150,0	80	26,4	40	
38 H 075 F	AF	38	153,62	152,25	158,0	80	26,4	40	
40 H 075 F	AF	40	161,70	160,33	168,0	80	26,4	40	
Ghisa Cast Iron	44 H 075 F	BF	44	177,87	176,50	184,0	80	26,4	40
	45 H 075 F	BF	45	181,91	180,54	192,0	80	26,4	40
	48 H 075 F	BF	48	194,04	192,67	200,0	90	26,4	45
	50 H 075	B	50	202,13	200,76	-	90	26,4	45

Df e Dm possono variare senza preavviso / Df and Dm can vary without notice
Nelle forme costruttive gli scarichi di alleggerimento possono leggermente variare / During manufacturing, the lightening relief may vary slightly

PULEGGE DENTATE PASSO IN POLLICI

IMPERIAL PITCH TIMING PULLEYS

H 100 (passo 1/2" - 12,7 mm) per cinghia di larghezza 1,00" - 25,4 mm
H 100 (1/2" pitch - 12,7 mm) for 1,00" - 25,4 mm width belt

	Codice Code	Disegno Drawing	N° Denti Teeth	Dp	De	Df	Dm	B	L
Acciaio/Steel	14 H 100 F	AF	14	56,60	55,23	64,0	40	31,8	45
	15 H 100 F	AF	15	60,64	59,27	66,5	45	31,8	45
	16 H 100 F	AF	16	64,68	63,31	70,0	45	31,8	45
	17 H 100 F	AF	17	68,72	67,35	75,0	45	31,8	45
	18 H 100 F	AF	18	72,77	71,40	79,0	55	31,8	45
	19 H 100 F	AF	19	76,81	75,44	82,5	60	31,8	45
	20 H 100 F	AF	20	80,85	79,48	87,0	62	31,8	45
	21 H 100 F	AF	21	84,89	83,52	91,0	65	31,8	45
	22 H 100 F	AF	22	88,94	87,57	94,0	68	31,8	45
	23 H 100 F	AF	23	92,98	91,61	97,0	72	31,8	45
	24 H 100 F	AF	24	97,02	95,65	102,0	72	31,8	45
	25 H 100 F	AF	25	101,06	99,69	106,0	72	31,8	45
	26 H 100 F	AF	26	105,11	103,74	112,0	80	31,8	45
	27 H 100 F	AF	27	109,15	107,78	115,0	80	31,8	45
	28 H 100 F	AF	28	113,19	111,82	120,0	80	31,8	45
	29 H 100 F	AF	29	117,23	115,86	120,0	80	31,8	45
	30 H 100 F	AF	30	121,28	119,91	128,0	80	31,8	45
	32 H 100 F	AF	32	129,36	127,99	135,0	80	31,8	45
	33 H 100 F	AF	33	133,40	132,03	142,0	80	31,8	45
	34 H 100 F	AF	34	137,45	136,08	142,0	80	31,8	45
35 H 100 F	AF	35	141,49	140,12	150,0	80	31,8	45	
36 H 100 F	BF	36	145,53	144,16	150,0	80	31,8	45	
38 H 100 F	BF	38	153,62	152,25	158,0	80	31,8	45	
40 H 100 F	BF	40	161,70	160,33	168,0	80	31,8	45	
Ghisa/Cast Iron	44 H 100 F	BF	44	177,87	176,50	184,0	80	31,8	50
	45 H 100 F	BF	45	181,91	180,54	192,0	80	31,8	50
	48 H 100 F	BF	48	194,04	192,67	200,0	90	31,8	50
	50 H 100	B	50	202,13	200,76	-	90	31,8	50
	52 H 100	B	52	210,21	208,84	-	90	31,8	50
	58 H 100	C	58	234,47	233,10	-	90	31,8	50
	60 H 100	C	60	242,55	241,18	-	90	31,8	50
	70 H 100	C	70	282,98	281,61	-	100	31,8	55
	72 H 100	C	72	291,06	289,69	-	100	31,8	55
	84 H 100	C	84	339,57	338,20	-	100	31,8	55
96 H 100	C	96	388,08	386,71	-	120	31,8	60	

Df e Dm possono variare senza preavviso / *Df and Dm can vary without notice*

Nelle forme costruttive gli scarichi di alleggerimento possono leggermente variare / *During manufacturing, the lightening relief may vary slightly*

PULEGGE DENTATE PASSO IN POLLICI IMPERIAL PITCH TIMING PULLEYS

H 150 (passo 1/2" - 12,7 mm) per cinghia di larghezza 1,50" - 38,1 mm
H 150 (1/2" pitch - 12,7 mm) for 1,50" - 38,1 mm width belt

	Codice Code	Disegno Drawing	N° Denti Teeth	Dp	De	Df	Dm	B	L
Acciaio/Steel	14 H 150 F	AF	14	56,60	55,23	64,0	40	46,0	58
	15 H 150 F	AF	15	60,64	59,27	66,5	45	46,0	58
	16 H 150 F	AF	16	64,68	63,31	70,0	45	46,0	58
	17 H 150 F	AF	17	68,72	67,35	75,0	45	46,0	58
	18 H 150 F	AF	18	72,77	71,40	79,0	55	46,0	58
	19 H 150 F	AF	19	76,81	75,44	82,5	60	46,0	58
	20 H 150 F	AF	20	80,85	79,48	87,0	62	46,0	58
	21 H 150 F	AF	21	84,89	83,52	91,0	65	46,0	58
	22 H 150 F	AF	22	88,94	87,57	94,0	68	46,0	58
	23 H 150 F	AF	23	92,98	91,61	97,0	72	46,0	58
	24 H 150 F	AF	24	97,02	95,65	102,0	72	46,0	58
	25 H 150 F	AF	25	101,06	99,69	106,0	72	46,0	58
	26 H 150 F	AF	26	105,11	103,74	112,0	80	46,0	58
	27 H 150 F	AF	27	109,15	107,78	115,0	80	46,0	58
	28 H 150 F	AF	28	113,19	111,82	120,0	80	46,0	58
	29 H 150 F	AF	29	117,23	115,86	120,0	80	46,0	58
	30 H 150 F	AF	30	121,28	119,91	128,0	80	46,0	58
	32 H 150 F	AF	32	129,36	127,99	135,0	80	46,0	58
	33 H 150 F	AF	33	133,40	132,03	142,0	80	46,0	58
	34 H 150 F	AF	34	137,45	136,08	142,0	80	46,0	58
35 H 150 F	AF	35	141,49	140,12	150,0	80	46,0	58	
36 H 150 F	BF	36	145,53	144,16	150,0	80	46,0	58	
38 H 150 F	BF	38	153,62	152,25	158,0	80	46,0	58	
40 H 150 F	BF	40	161,70	160,33	168,0	80	46,0	58	
Ghisa/Cast Iron	44 H 150 F	BF	44	177,87	176,50	184,0	80	46,0	58
	45 H 150 F	BF	45	181,91	180,54	192,0	80	46,0	58
	48 H 150 F	BF	48	194,04	192,67	200,0	90	46,0	65
	50 H 150	B	50	202,13	200,76	-	90	46,0	65
	52 H 150	B	52	210,21	208,84	-	90	46,0	65
	58 H 150	C	58	234,47	233,10	-	90	46,0	65
	60 H 150	C	60	242,55	241,18	-	90	46,0	65
	70 H 150	C	70	282,98	281,61	-	100	46,0	65
	72 H 150	C	72	291,06	289,69	-	100	46,0	65
	84 H 150	C	84	339,57	338,20	-	100	46,0	65
96 H 150	C	96	388,08	386,71	-	120	46,0	65	

Df e Dm possono variare senza preavviso / Df and Dm can vary without notice
Nelle forme costruttive gli scarichi di alleggerimento possono leggermente variare / During manufacturing, the lightening relief may vary slightly

PULEGGE DENTATE PASSO IN POLLICI IMPERIAL PITCH TIMING PULLEYS

H 200 (passo 1/2" - 12,7 mm) per cinghia di larghezza 2,00" - 50,8 mm
H 200 (1/2" pitch - 12,7 mm) for 2,00" - 50,8 mm width belt

	Codice Code	Disegno Drawing	N° Denti Teeth	Dp	De	Df	Dm	B	L
Acciaio/Steel	14 H 200 F	AF	14	56,60	55,23	64,0	40	58,7	70
	15 H 200 F	AF	15	60,64	59,27	66,5	45	58,7	70
	16 H 200 F	AF	16	64,68	63,31	70,0	45	58,7	70
	17 H 200 F	AF	17	68,72	67,35	75,0	45	58,7	70
	18 H 200 F	AF	18	72,77	71,40	79,0	55	58,7	70
	19 H 200 F	AF	19	76,81	75,44	82,5	60	58,7	70
	20 H 200 F	AF	20	80,85	79,48	87,0	62	58,7	70
	21 H 200 F	AF	21	84,89	83,52	91,0	65	58,7	70
	22 H 200 F	AF	22	88,94	87,57	94,0	68	58,7	70
	23 H 200 F	AF	23	92,98	91,61	97,0	72	58,7	70
	24 H 200 F	AF	24	97,02	95,65	102,0	72	58,7	70
	25 H 200 F	AF	25	101,06	99,69	106,0	72	58,7	70
	26 H 200 F	AF	26	105,11	103,74	112,0	80	58,7	70
	27 H 200 F	AF	27	109,15	107,78	115,0	80	58,7	70
	28 H 200 F	AF	28	113,19	111,82	120,0	80	58,7	70
	29 H 200 F	AF	29	117,23	115,86	120,0	80	58,7	70
	30 H 200 F	AF	30	121,28	119,91	128,0	80	58,7	70
	32 H 200 F	AF	32	129,36	127,99	135,0	80	58,7	70
	33 H 200 F	AF	33	133,40	132,03	142,0	80	58,7	70
	34 H 200 F	AF	34	137,45	136,08	142,0	80	58,7	70
35 H 200 F	AF	35	141,49	140,12	150,0	80	58,7	70	
36 H 200 F	BF	36	145,53	144,16	150,0	80	58,7	70	
38 H 200 F	BF	38	153,62	152,25	158,0	80	58,7	70	
40 H 200 F	BF	40	161,70	160,33	168,0	80	58,7	70	
Ghisa/Cast Iron	44 H 200 F	BF	44	177,87	176,50	184,0	80	58,7	70
	45 H 200 F	BF	45	181,91	180,54	192,0	80	58,7	70
	48 H 200 F	BF	48	194,04	192,67	200,0	90	58,7	75
	50 H 200	B	50	202,13	200,76	-	90	58,7	75
	52 H 200	B	52	210,21	208,84	-	90	58,7	75
	58 H 200	C	58	234,47	233,10	-	90	58,7	75
	60 H 200	C	60	242,55	241,18	-	90	58,7	75
	70 H 200	C	70	282,98	281,61	-	100	58,7	75
	72 H 200	C	72	291,06	289,69	-	100	58,7	75
	84 H 200	C	84	339,57	338,20	-	100	58,7	75
96 H 200	C	96	388,08	386,71	-	120	58,7	75	

Df e Dm possono variare senza preavviso / Df and Dm can vary without notice

Nelle forme costruttive gli scarichi di alleggerimento possono leggermente variare / During manufacturing, the lightening relief may vary slightly

PULEGGE DENTATE PASSO IN POLLICI IMPERIAL PITCH TIMING PULLEYS

H 300 (passo 1/2" - 12,7 mm) per cinghia di larghezza 3,00" - 76,2 mm
H 300 (1/2" pitch - 12,7 mm) for 3,00" - 76,2 mm width belt

	Codice Code	Disegno Drawing	N° Denti Teeth	Dp	De	Df	Dm	B	L
Acciaio/Steel	14 H 300 F	AF	14	56,60	55,23	64,0	40	85,7	100
	15 H 300 F	AF	15	60,64	59,27	66,5	45	85,7	100
	16 H 300 F	AF	16	64,68	63,31	70,0	45	85,7	100
	17 H 300 F	AF	17	68,72	67,35	75,0	45	85,7	100
	18 H 300 F	AF	18	72,77	71,40	79,0	55	85,7	100
	19 H 300 F	AF	19	76,81	75,44	82,5	60	85,7	100
	20 H 300 F	AF	20	80,85	79,48	87,0	62	85,7	100
	21 H 300 F	AF	21	84,89	83,52	91,0	65	85,7	100
	22 H 300 F	AF	22	88,94	87,57	94,0	68	85,7	100
	23 H 300 F	AF	23	92,98	91,61	97,0	72	85,7	100
	24 H 300 F	AF	24	97,02	95,65	102,0	72	85,7	100
	25 H 300 F	AF	25	101,06	99,69	106,0	72	85,7	100
	26 H 300 F	AF	26	105,11	103,74	112,0	80	85,7	100
	27 H 300 F	AF	27	109,15	107,78	115,0	80	85,7	100
	28 H 300 F	AF	28	113,19	111,82	120,0	80	85,7	100
	29 H 300 F	AF	29	117,23	115,86	120,0	80	85,7	100
	30 H 300 F	AF	30	121,28	119,91	128,0	80	85,7	100
	32 H 300 F	AF	32	129,36	127,99	135,0	80	85,7	100
	33 H 300 F	AF	33	133,40	132,03	142,0	80	85,7	100
	34 H 300 F	AF	34	137,45	136,08	142,0	80	85,7	100
35 H 300 F	AF	35	141,49	140,12	150,0	80	85,7	100	
36 H 300 F	BF	36	145,53	144,16	150,0	80	85,7	100	
38 H 300 F	BF	38	153,62	152,25	158,0	80	85,7	100	
40 H 300 F	BF	40	161,70	160,33	168,0	80	85,7	100	
Ghisa/Cast Iron	44 H 300 F	BF	44	177,87	176,50	184,0	80	85,7	100
	45 H 300 F	BF	45	181,91	180,54	192,0	80	85,7	100
	48 H 300 F	BF	48	194,04	192,67	200,0	90	85,7	100
	50 H 300	B	50	202,13	200,76	-	90	85,7	100
	52 H 300	B	52	210,21	208,84	-	90	85,7	100
	58 H 300	C	58	234,47	233,10	-	90	85,7	100
	60 H 300	C	60	242,55	241,18	-	90	85,7	100
	70 H 300	C	70	282,98	281,61	-	100	85,7	100
	72 H 300	C	72	291,06	289,69	-	100	85,7	100
	84 H 300	C	84	339,57	338,20	-	100	85,7	100
96 H 300	C	96	388,08	386,71	-	120	85,7	100	

Df e Dm possono variare senza preavviso / Df and Dm can vary without notice
Nelle forme costruttive gli scarichi di alleggerimento possono leggermente variare / During manufacturing, the lightening relief may vary slightly

PULEGGE DENTATE PASSO IN POLLICI IMPERIAL PITCH TIMING PULLEYS

XH 200 (passo 7/8" - 22,225 mm) per cinghia di larghezza 2,00" - 50,8 mm
XH 200 (7/8" pitch - 22,225 mm) for 2,00" - 50,8 mm width belt

Ghisa/Cast Iron	Codice Code	Disegno Drawing	N° Denti Teeth	Dp	De	Df	Dm	B	L
	18 XH 200 F	AF	18	127,34	124,55	136	100	65	80
	20 XH 200 F	AF	20	141,49	138,70	155	100	65	80
	22 XH 200 F	AF	22	155,64	152,83	162	110	65	80
	24 XH 200 F	AF	24	169,79	167,00	176	120	65	80
	26 XH 200 F	AF	26	183,92	181,13	191	150	65	80
	28 XH 200 F	AF	28	198,08	195,29	213	150	65	80
	30 XH 200 F	AF	30	212,23	209,44	225	150	65	80
	32 XH 200 F	AF	32	226,38	223,59	240	150	65	80
	40 XH 200 F	BF	40	282,98	280,19	290	150	65	100
	44 XH 200	B	44	311,28	308,48	-	150	65	100
48 XH 200	B	48	339,57	336,78	-	150	65	100	

XH 300 (passo 7/8" - 22,225 mm) per cinghia di larghezza 3,00" - 76,2 mm
XH 300 (7/8" pitch - 22,225 mm) for 3,00" - 76,2 mm width belt

Ghisa/Cast Iron	Codice Code	Disegno Drawing	N° Denti Teeth	Dp	De	Df	Dm	B	L
	18 XH 300 F	AF	18	127,34	124,55	136	100	92	110
	20 XH 300 F	AF	20	141,49	138,70	155	100	92	110
	22 XH 300 F	AF	22	155,64	152,83	162	110	92	110
	24 XH 300 F	AF	24	169,79	167,00	176	120	92	110
	26 XH 300 F	AF	26	183,92	181,13	191	150	92	110
	28 XH 300 F	AF	28	198,08	195,29	210	150	92	110
	30 XH 300 F	AF	30	212,23	209,44	225	150	92	110
	32 XH 300 F	AF	32	226,38	223,59	240	150	92	110
	40 XH 300 F	BF	40	282,98	280,19	290	150	92	120
	44 XH 300	B	44	311,28	308,48	-	150	92	120
48 XH 300	B	48	339,57	336,78	-	150	92	120	

XH 400 (passo 7/8" - 22,225 mm) per cinghia di larghezza 4,00" - 101,6 mm
XH 400 (7/8" pitch - 22,225 mm) for 4,00" - 101,6 mm width belt

Ghisa/Cast Iron	Codice Code	Disegno Drawing	N° Denti Teeth	Dp	De	Df	Dm	B	L
	18 XH 400 F	AF	18	127,34	124,55	136	100	119	132
	20 XH 400 F	AF	20	141,49	138,70	155	100	119	132
	22 XH 400 F	AF	22	155,64	152,83	162	110	119	132
	24 XH 400 F	AF	24	169,79	167,00	176	120	119	132
	26 XH 400 F	AF	26	183,92	181,13	191	150	119	132
	28 XH 400 F	AF	28	198,08	195,29	210	150	119	132
	30 XH 400 F	AF	30	212,23	209,44	225	150	119	132
	32 XH 400 F	AF	32	226,38	223,59	240	150	119	132
	40 XH 400 F	BF	40	282,98	280,19	290	150	119	132
	44 XH 400	B	44	311,28	308,48	-	150	119	132
48 XH 400	B	48	339,57	336,78	-	150	119	132	

Df e Dm possono variare senza preavviso / Df and Dm can vary without notice

Nelle forme costruttive gli scarichi di alleggerimento possono leggermente variare / During manufacturing, the lightening relief may vary slightly

PULEGGE DENTATE PASSO HTD HTD PITCH TIMING PULLEYS

HTD 3M 06 (passo 3 mm) per cinghia di larghezza 6 mm HTD 3M 06 (3 mm pitch) for 6 mm width belt

Alluminio/Aluminium	Codice Code	Disegno Drawing	N° Denti Teeth	Dp	De	Df	Dm	B	L
	10 3M 06 F	1F	10	9,55	8,79	13,0	13,0	7,2	14,5
	12 3M 06 F	1F	12	11,46	10,70	15,0	15,0	7,2	14,5
	14 3M 06 F	1F	14	13,37	12,61	16,0	16,0	7,2	14,5
	15 3M 06 F	1F	15	14,32	13,56	17,5	17,5	7,2	14,5
	16 3M 06 F	AF	16	15,28	14,52	17,5	10,0	9,8	17,5
	18 3M 06 F	AF	18	17,19	16,43	20,0	11,0	9,8	17,5
	20 3M 06 F	AF	20	19,10	18,34	23,0	13,0	9,8	17,5
	21 3M 06 F	AF	21	20,05	19,29	25,0	13,0	9,8	17,5
	22 3M 06 F	AF	22	21,01	20,25	25,0	13,0	9,8	17,5
	24 3M 06 F	AF	24	22,92	22,16	25,0	13,0	9,8	17,5
	26 3M 06 F	AF	26	24,83	24,07	28,0	16,0	9,8	17,5
	28 3M 06 F	AF	28	26,74	25,98	32,0	18,0	9,8	17,5
	30 3M 06 F	AF	30	28,65	27,89	32,0	20,0	9,8	17,5
	32 3M 06 F	AF	32	30,56	29,80	36,0	22,0	9,8	17,5
	36 3M 06 F	AF	36	34,38	33,62	39,0	26,0	10,3	18,0
40 3M 06 F	AF	40	38,20	37,44	42,0	28,0	10,3	18,0	
44 3M 06 F	AF	44	42,02	41,25	48,0	33,0	10,3	18,0	
48 3M 06	A	48	45,84	45,07	-	33,0	10,3	18,6	
60 3M 06	A	60	57,30	56,53	-	33,0	10,3	18,6	
72 3M 06	A	72	68,75	67,99	-	33,0	10,3	18,6	

HTD 3M 09 (passo 3 mm) per cinghia di larghezza 9 mm HTD 3M 09 (3 mm pitch) for 9 mm width belt

Alluminio/Aluminium	Codice Code	Disegno Drawing	N° Denti Teeth	Dp	De	Df	Dm	B	L
	10 3M 09 F	1F	10	9,55	8,79	13,0	13,0	10,2	17,5
	12 3M 09 F	1F	12	11,46	10,70	15,0	15,0	10,2	17,5
	14 3M 09 F	1F	14	13,37	12,61	16,0	16,0	10,2	17,5
	15 3M 09 F	1F	15	14,32	13,56	17,5	17,5	10,2	17,5
	16 3M 09 F	AF	16	15,28	14,52	17,5	10,0	12,8	20,6
	18 3M 09 F	AF	18	17,19	16,43	20,0	11,0	12,8	20,6
	20 3M 09 F	AF	20	19,10	18,34	23,0	13,0	12,8	20,6
	21 3M 09 F	AF	21	20,05	19,29	25,0	13,0	12,8	20,6
	22 3M 09 F	AF	22	21,01	20,25	25,0	13,0	12,8	20,6
	24 3M 09 F	AF	24	22,92	22,16	25,0	13,0	12,8	20,6
	26 3M 09 F	AF	26	24,83	24,07	28,0	16,0	12,8	20,6
	28 3M 09 F	AF	28	26,74	25,98	32,0	18,0	12,8	20,6
	30 3M 09 F	AF	30	28,65	27,89	32,0	20,0	12,8	20,6
	32 3M 09 F	AF	32	30,56	29,80	36,0	22,0	12,8	20,6
	36 3M 09 F	AF	36	34,38	33,62	39,0	26,0	13,4	22,2
40 3M 09 F	AF	40	38,20	37,44	42,0	28,0	13,4	22,2	
44 3M 09 F	AF	44	42,02	41,25	48,0	33,0	13,4	22,2	
48 3M 09	A	48	45,84	45,07	-	33,0	13,4	22,2	
60 3M 09	A	60	57,30	56,53	-	33,0	13,4	22,2	
72 3M 09	A	72	68,75	67,99	-	33,0	13,4	22,2	

HTD 3M 15 (passo 3 mm) per cinghia di larghezza 15 mm HTD 3M 15 (3 mm pitch) for 15 mm width belt

Alluminio/Aluminium	Codice Code	Disegno Drawing	N° Denti Teeth	Dp	De	Df	Dm	B	L
	10 3M 15 F	1F	10	9,55	8,79	13,0	13,0	17,0	26,0
	12 3M 15 F	1F	12	11,46	10,70	15,0	15,0	17,0	26,0
	14 3M 15 F	1F	14	13,37	12,61	16,0	16,0	17,0	26,0
	15 3M 15 F	1F	15	14,32	13,56	17,5	17,5	17,0	26,0
	16 3M 15 F	AF	16	15,28	14,52	17,5	10,0	19,5	26,0
	18 3M 15 F	AF	18	17,19	16,43	20,0	11,0	19,5	26,0
	20 3M 15 F	AF	20	19,10	18,34	23,0	13,0	19,5	26,0
	21 3M 15 F	AF	21	20,05	19,29	25,0	13,0	19,5	26,0
	22 3M 15 F	AF	22	21,01	20,25	25,0	13,0	19,5	26,0
	24 3M 15 F	AF	24	22,92	22,16	25,0	13,0	19,5	26,0
	26 3M 15 F	AF	26	24,83	24,07	28,0	16,0	19,5	26,0
	28 3M 15 F	AF	28	26,74	25,98	32,0	18,0	19,5	26,0
	30 3M 15 F	AF	30	28,65	27,89	32,0	20,0	19,5	26,0
	32 3M 15 F	AF	32	30,56	29,80	36,0	22,0	19,5	26,0
	36 3M 15 F	AF	36	34,38	33,62	39,0	26,0	20,0	30,0
40 3M 15 F	AF	40	38,20	37,44	42,0	28,0	20,0	30,0	
44 3M 15 F	AF	44	42,02	41,25	48,0	33,0	20,0	30,0	
48 3M 15	A	48	45,84	45,07	-	33,0	20,0	30,0	
60 3M 15	A	60	57,30	56,53	-	33,0	20,0	30,0	
72 3M 15	A	72	68,75	67,99	-	33,0	20,0	30,0	

Df e Dm possono variare senza preavviso / Df and Dm can vary without notice
Nelle forme costruttive gli scarichi di alleggerimento possono leggermente variare / During manufacturing, the lightening relief may vary slightly

PULEGGE DENTATE PASSO HTD HTD PITCH TIMING PULLEYS

HTD 5M 09 (passo 5 mm) per cinghia di larghezza 9 mm HTD 5M 09 (5 mm pitch) for 9 mm width belt

	Codice Code	Disegno Drawing	N° Denti Teeth	Dp	De	Df	Dm	B	L
Acciaio/Steel	12 5M 09 F	AF	12	19,09	17,95	23,0	12,0	14,5	20,0
	14 5M 09 F	AF	14	22,28	21,14	25,0	13,0	14,5	20,0
	15 5M 09 F	AF	15	23,87	22,73	28,0	16,0	14,5	20,0
	16 5M 09 F	AF	16	25,46	24,32	28,0	16,2	14,5	20,0
	18 5M 09 F	AF	18	28,65	27,50	32,0	20,0	14,5	20,0
	20 5M 09 F	AF	20	31,83	30,69	36,0	23,0	14,5	22,5
	21 5M 09 F	AF	21	33,42	32,28	38,0	24,0	14,5	22,5
	22 5M 09 F	AF	22	35,01	33,87	39,0	25,5	14,5	22,5
	24 5M 09 F	AF	24	38,20	37,05	42,0	27,0	14,5	22,5
	26 5M 09 F	AF	26	41,38	40,24	44,0	30,0	14,5	22,5
	28 5M 09 F	AF	28	44,56	43,42	48,0	30,5	14,5	22,5
	30 5M 09 F	AF	30	47,75	46,60	51,0	35,0	14,5	22,5
	32 5M 09 F	AF	32	50,93	49,79	54,0	38,0	14,5	22,5
	36 5M 09 F	AF	36	57,30	56,15	60,0	38,0	14,5	22,5
Alum	40 5M 09 F	AF	40	63,66	62,52	71,0	38,0	14,5	22,5
	44 5M 09	B	44	70,03	68,89	-	38,0	14,5	25,5
	48 5M 09	B	48	76,39	75,25	-	45,0	14,5	25,5
	60 5M 09	B	60	95,49	94,35	-	45,0	14,5	25,5
	72 5M 09	B	72	114,59	113,45	-	45,0	14,5	25,5

HTD 5M 15 (passo 5 mm) per cinghia di larghezza 15 mm HTD 5M 15 (5 mm pitch) for 15 mm width belt

	Codice Code	Disegno Drawing	N° Denti Teeth	Dp	De	Df	Dm	B	L
Acciaio/Steel	12 5M 15 F	AF	12	19,09	17,95	23,0	12,0	20,5	26,0
	14 5M 15 F	AF	14	22,28	21,14	25,0	13,0	20,5	26,0
	15 5M 15 F	AF	15	23,87	22,73	28,0	16,0	20,5	26,0
	16 5M 15 F	AF	16	25,46	24,32	28,0	16,2	20,5	26,0
	18 5M 15 F	AF	18	28,65	27,50	32,0	20,0	20,5	26,0
	20 5M 15 F	AF	20	31,83	30,69	36,0	23,0	20,5	26,0
	21 5M 15 F	AF	21	33,42	32,28	38,0	24,0	20,5	26,0
	22 5M 15 F	AF	22	35,01	33,87	39,0	25,5	20,5	26,0
	24 5M 15 F	AF	24	38,20	37,05	42,0	27,0	20,5	28,0
	26 5M 15 F	AF	26	41,38	40,24	44,0	30,0	20,5	28,0
	28 5M 15 F	AF	28	44,56	43,42	48,0	30,5	20,5	28,0
	30 5M 15 F	AF	30	47,75	46,60	51,0	35,0	20,5	28,0
	32 5M 15 F	AF	32	50,93	49,79	54,0	38,0	20,5	28,0
	36 5M 15 F	AF	36	57,30	56,15	60,0	38,0	20,5	28,0
Alum	40 5M 15 F	AF	40	63,66	62,52	71,0	38,0	20,5	28,0
	44 5M 15	B	44	70,03	68,89	-	38,0	20,5	30,0
	48 5M 15	B	48	76,39	75,25	-	40,0	20,5	30,0
	60 5M 15	B	60	95,49	94,35	-	50,0	20,5	30,0
	72 5M 15	B	72	114,59	113,45	-	50,0	20,5	30,0

HTD 5M 25 (passo 5 mm) per cinghia di larghezza 25 mm HTD 5M 25 (5 mm pitch) for 25 mm width belt

	Codice Code	Disegno Drawing	N° Denti Teeth	Dp	De	Df	Dm	B	L
Acciaio/Steel	12 5M 25 F	AF	12	19,09	17,95	23,0	12,0	30,5	36,0
	14 5M 25 F	AF	14	22,28	21,14	25,0	13,0	30,5	36,0
	15 5M 25 F	AF	15	23,87	22,73	28,0	16,0	30,5	36,0
	16 5M 25 F	AF	16	25,46	24,32	28,0	16,2	30,5	36,0
	18 5M 25 F	AF	18	28,65	27,50	32,0	20,0	30,5	36,0
	20 5M 25 F	AF	20	31,83	30,69	36,0	23,0	30,5	36,0
	21 5M 25 F	AF	21	33,42	32,28	38,0	24,0	30,5	38,0
	22 5M 25 F	AF	22	35,01	33,87	39,0	25,5	30,5	38,0
	24 5M 25 F	AF	24	38,20	37,05	42,0	27,0	30,5	38,0
	26 5M 25 F	AF	26	41,38	40,24	44,0	30,0	30,5	38,0
	28 5M 25 F	AF	28	44,56	43,42	48,0	30,5	30,5	38,0
	30 5M 25 F	AF	30	47,75	46,60	51,0	35,0	30,5	38,0
	32 5M 25 F	AF	32	50,93	49,79	54,0	38,0	30,5	38,0
	36 5M 25 F	AF	36	57,30	56,15	60,0	38,0	30,5	38,0
Alum	40 5M 25 F	AF	40	63,66	62,52	71,0	38,0	30,5	38,0
	44 5M 25	B	44	70,03	68,89	-	38,0	30,5	40,0
	48 5M 25	B	48	76,39	75,25	-	40,0	30,5	40,0
	60 5M 25	B	60	95,49	94,35	-	50,0	30,5	40,0
	72 5M 25	B	72	114,59	113,45	-	50,0	30,5	40,0

Df e Dm possono variare senza preavviso / Df and Dm can vary without notice

Nelle forme costruttive gli scarichi di alleggerimento possono leggermente variare / During manufacturing, the lightening relief may vary slightly

PULEGGE DENTATE PASSO HTD HTD PITCH TIMING PULLEYS

HTD 8M 20 (passo 8 mm) per cinghia di larghezza 20 mm HTD 8M 20 (8 mm pitch) for 20 mm width belt

	Codice Code	Disegno Drawing	N° Denti Teeth	Dp	De	Df	Dm	B	L
	Acciaio/Steel	22 8M 20 F	AF	22	56,02	54,65	60	43	28
24 8M 20 F		AF	24	61,12	59,75	66	45	28	38
26 8M 20 F		AF	26	66,21	64,84	70	48	28	38
28 8M 20 F		AF	28	71,30	70,08	75	50	28	38
30 8M 20 F		AF	30	76,39	75,13	83	55	28	38
32 8M 20 F		AF	32	81,49	80,16	87	60	28	38
34 8M 20 F		AF	34	86,58	85,22	91	70	28	38
36 8M 20 F		AF	36	91,67	90,30	97	70	28	38
38 8M 20 F		AF	38	96,77	95,39	102	75	28	38
40 8M 20 F		AF	40	101,86	100,49	106	75	28	38
44 8M 20 F		AF	44	112,05	110,67	120	75	28	38
48 8M 20 F		AF	48	122,23	120,86	128	75	28	38
56 8M 20 F		BF	56	142,60	141,23	150	80	28	38
64 8M 20 F		BF	64	162,97	161,60	168	80	28	38
72 8M 20 F		BF	72	183,35	181,97	192	80	28	38
Ghisa Cast Iron		80 8M 20	B	80	203,72	202,35	-	90	28
	90 8M 20	B	90	229,18	227,81	-	90	28	38
	112 8M 20	C	112	285,21	283,83	-	90	28	38
	144 8M 20	C	144	366,69	365,32	-	90	28	38
	168 8M 20	C	168	427,81	426,44	-	100	28	38
	192 8M 20	C	192	488,92	487,55	-	100	28	38

HTD 8M 30 (passo 8 mm) per cinghia di larghezza 30 mm HTD 8M 30 (8 mm pitch) for 30 mm width belt

	Codice Code	Disegno Drawing	N° Denti Teeth	Dp	De	Df	Dm	B	L
	Acciaio/Steel	22 8M 30 F	AF	22	56,02	54,65	60	43	38
24 8M 30 F		AF	24	61,12	59,75	66	45	38	48
26 8M 30 F		AF	26	66,21	64,84	70	48	38	48
28 8M 30 F		AF	28	71,30	70,08	75	50	38	48
30 8M 30 F		AF	30	76,39	75,13	83	55	38	48
32 8M 30 F		AF	32	81,49	80,16	87	60	38	48
34 8M 30 F		AF	34	86,58	85,22	91	66	38	48
36 8M 30 F		AF	36	91,67	90,30	97	70	38	48
38 8M 30 F		AF	38	96,77	95,39	102	75	38	48
40 8M 30 F		AF	40	101,86	100,49	106	75	38	48
44 8M 30 F		AF	44	112,05	110,67	120	75	38	48
48 8M 30 F		AF	48	122,23	120,86	128	75	38	48
56 8M 30 F		BF	56	142,60	141,23	150	90	38	48
64 8M 30 F		BF	64	162,97	161,60	168	90	38	48
72 8M 30 F		BF	72	183,35	181,97	192	95	38	48
Ghisa Cast Iron		80 8M 30	B	80	203,72	202,35	-	100	38
	90 8M 30	B	90	229,18	227,81	-	100	38	48
	112 8M 30	C	112	285,21	283,83	-	100	38	48
	144 8M 30	C	144	366,69	365,32	-	100	38	48
	168 8M 30	C	168	427,81	426,44	-	100	38	48
	192 8M 30	C	192	488,92	487,55	-	100	38	48

Df e Dm possono variare senza preavviso / Df and Dm can vary without notice
Nelle forme costruttive gli scarichi di alleggerimento possono leggermente variare / During manufacturing, the lightening relief may vary slightly

PULEGGE DENTATE PASSO HTD HTD PITCH TIMING PULLEYS

HTD 8M 50 (passo 8 mm) per cinghia di larghezza 50 mm HTD 8M 50 (8 mm pitch) for 50 mm width belt

	Codice Code	Disegno Drawing	N° Denti Teeth	Dp	De	Df	Dm	B	L
Acciaio/Steel	22 8M 50 F	AF	22	56,02	54,65	60	43	60	70
	24 8M 50 F	AF	24	61,12	59,75	66	45	60	70
	26 8M 50 F	AF	26	66,21	64,84	70	48	60	70
	28 8M 50 F	AF	28	71,30	70,08	75	50	60	70
	30 8M 50 F	AF	30	76,39	75,13	83	55	60	70
	32 8M 50 F	AF	32	81,49	80,16	87	60	60	70
	34 8M 50 F	AF	34	86,58	85,22	91	66	60	70
	36 8M 50 F	AF	36	91,67	90,30	97	70	60	70
	38 8M 50 F	AF	38	96,77	95,39	102	75	60	70
	40 8M 50 F	AF	40	101,86	100,49	106	75	60	70
	44 8M 50 F	AF	44	112,05	110,67	120	75	60	70
	48 8M 50 F	AF	48	122,23	120,86	128	80	60	70
	56 8M 50 F	SBF	56	142,60	141,23	150	90	60	60
	64 8M 50 F	SBF	64	162,97	161,60	168	100	60	60
	72 8M 50 F	SBF	72	183,35	181,97	192	100	60	60
Ghisa Cast Iron	80 8M 50	SB	80	203,72	202,35	-	110	60	60
	90 8M 50	SB	90	229,18	227,81	-	110	60	60
	112 8M 50	SC	112	285,21	283,83	-	110	60	60
	144 8M 50	SC	144	366,69	365,32	-	110	60	60
	168 8M 50	SC	168	427,81	426,44	-	120	60	60
	192 8M 50	SC	192	488,92	487,55	-	130	60	60

HTD 8M 85 (passo 8 mm) per cinghia di larghezza 85 mm HTD 8M 85 (8 mm pitch) for 85 mm width belt

	Codice Code	Disegno Drawing	N° Denti Teeth	Dp	De	Df	Dm	B	L
Acciaio/Steel	22 8M 85 F	AF	22	56,02	54,65	60	43	95	105
	24 8M 85 F	AF	24	61,12	59,75	66	45	95	105
	26 8M 85 F	AF	26	66,21	64,84	70	48	95	105
	28 8M 85 F	AF	28	71,30	70,08	75	50	95	105
	30 8M 85 F	AF	30	76,39	75,13	83	55	95	105
	32 8M 85 F	AF	32	81,49	80,16	87	60	95	105
	34 8M 85 F	AF	34	86,58	85,22	91	66	95	105
	36 8M 85 F	AF	36	91,67	90,30	97	70	95	105
	38 8M 85 F	AF	38	96,77	95,39	102	75	95	105
	40 8M 85 F	AF	40	101,86	100,49	106	75	95	105
	44 8M 85 F	AF	44	112,05	110,67	120	75	95	105
	48 8M 85 F	AF	48	122,23	120,86	128	80	95	105
	56 8M 85 F	AF	56	142,60	141,23	150	90	95	105
	64 8M 85 F	SBF	64	162,97	161,60	168	100	95	95
	72 8M 85 F	SBF	72	183,35	181,97	192	100	95	95
Ghisa Cast Iron	80 8M 85	SC	80	203,72	202,35	-	110	95	95
	90 8M 85	SC	90	229,18	227,81	-	110	95	95
	112 8M 85	SC	112	285,21	283,83	-	110	95	95
	144 8M 85	SC	144	366,69	365,32	-	110	95	95
	168 8M 85	SC	168	427,81	426,44	-	120	95	95
	192 8M 85	SC	192	488,92	487,55	-	130	95	95

Df e Dm possono variare senza preavviso / Df and Dm can vary without notice

Nelle forme costruttive gli scarichi di alleggerimento possono leggermente variare / During manufacturing, the lightening relief may vary slightly

PULEGGE DENTATE PASSO HTD HTD PITCH TIMING PULLEYS

HTD 14M 40 (passo 14 mm) per cinghia di larghezza 40 mm HTD 14M 40 (14 mm pitch) for 40 mm width belt

	HTD 14M 40 (passo 14 mm) per cinghia di larghezza 40 mm HTD 14M 40 (14 mm pitch) for 40 mm width belt								
	Codice Code	Disegno Drawing	N° Denti Teeth	Dp	De	Df	Dm	B	L
Acciaio/Steel	28 14M 40 F	AF	28	124,78	121,98	128	100	54	69
	29 14M 40 F	AF	29	129,23	126,44	138	100	54	69
	30 14M 40 F	AF	30	133,69	130,90	138	100	54	69
	32 14M 40 F	AF	32	142,60	139,81	154	100	54	69
	34 14M 40 F	AF	34	151,51	148,72	160	100	54	69
	36 14M 40 F	AF	36	160,43	157,68	168	100	54	69
	38 14M 40 F	AF	38	169,34	166,60	183	120	54	69
	40 14M 40 F	AF	40	178,25	175,49	188	120	54	69
	44 14M 40 F	AF	44	196,08	193,28	211	120	54	69
Ghisa/Cast Iron	48 14M 40 F	BF	48	213,90	211,11	226	135	54	69
	56 14M 40 F	BF	56	249,55	246,76	256	135	54	69
	64 14M 40 F	BF	64	285,21	282,41	296	135	54	69
	72 14M 40	C	72	320,86	318,06	-	135	54	69
	80 14M 40	C	80	356,51	353,71	-	135	54	69
	90 14M 40	C	90	401,07	398,28	-	135	54	69
	112 14M 40	C	112	499,11	496,32	-	135	54	69
	144 14M 40	C	144	641,71	638,92	-	135	54	69
	168 14M 40	C	168	748,66	745,87	-	135	54	69
	192 14M 40	C	192	855,62	852,82	-	135	54	69
216 14M 40	C	216	962,57	959,76	-	150	54	69	

HTD 14M 55 (passo 14 mm) per cinghia di larghezza 55 mm HTD 14M 55 (14 mm pitch) for 55 mm width belt

	HTD 14M 55 (passo 14 mm) per cinghia di larghezza 55 mm HTD 14M 55 (14 mm pitch) for 55 mm width belt								
	Codice Code	Disegno Drawing	N° Denti Teeth	Dp	De	Df	Dm	B	L
Acciaio/Steel	28 14M 55 F	AF	28	124,78	121,98	128	100	70	85
	29 14M 55 F	AF	29	129,23	126,44	138	100	70	85
	30 14M 55 F	AF	30	133,69	130,90	138	100	70	85
	32 14M 55 F	AF	32	142,60	139,81	154	100	70	85
	34 14M 55 F	AF	34	151,51	148,72	160	100	70	85
	36 14M 55 F	AF	36	160,43	157,68	168	100	70	85
	38 14M 55 F	AF	38	169,34	166,60	183	120	70	85
	40 14M 55 F	AF	40	178,25	175,49	188	120	70	85
	44 14M 55 F	AF	44	196,08	193,28	211	120	70	85
Ghisa/Cast Iron	48 14M 55 F	SBF	48	213,90	211,11	226	135	70	70
	56 14M 55 F	SBF	56	249,55	246,76	256	135	70	70
	64 14M 55 F	SBF	64	285,21	282,41	296	135	70	70
	72 14M 55	SC	72	320,86	318,06	-	135	70	70
	80 14M 55	SC	80	356,51	353,71	-	135	70	70
	90 14M 55	SC	90	401,07	398,28	-	135	70	70
	112 14M 55	SC	112	499,11	496,32	-	135	70	70
	144 14M 55	SC	144	641,71	638,92	-	135	70	70
	168 14M 55	SC	168	748,66	745,87	-	135	70	70
	192 14M 55	SC	192	855,62	852,82	-	135	70	70
216 14M 55	SC	216	962,57	959,76	-	150	70	70	

Df e Dm possono variare senza preavviso / Df and Dm can vary without notice
Nelle forme costruttive gli scarichi di alleggerimento possono leggermente variare / During manufacturing, the lightening relief may vary slightly

PULEGGE DENTATE PASSO HTD HTD PITCH TIMING PULLEYS

HTD 14M 85 (passo 14 mm) per cinghia di larghezza 85 mm HTD 14M 85 (14 mm pitch) for 85 mm width belt

	Codice Code	Disegno Drawing	N° Denti Teeth	Dp	De	Df	Dm	B	L
Acciaio/Steel	28 14M 85 F	AF	28	124,78	121,98	128	100	102	117
	29 14M 85 F	AF	29	129,23	126,44	138	100	102	117
	30 14M 85 F	AF	30	133,69	130,90	138	100	102	117
	32 14M 85 F	AF	32	142,60	139,81	154	100	102	117
	34 14M 85 F	AF	34	151,51	148,72	160	100	102	117
	36 14M 85 F	AF	36	160,43	157,68	168	100	102	117
	38 14M 85 F	AF	38	169,34	166,60	183	120	102	117
	40 14M 85 F	AF	40	178,25	175,49	188	135	102	117
Ghisa/Cast Iron	44 14M 85 F	AF	44	196,08	193,28	211	135	102	117
	48 14M 85 F	AF	48	213,90	211,11	226	150	102	117
	56 14M 85 F	SBF	56	249,55	246,76	256	150	102	102
	64 14M 85 F	SBF	64	285,21	282,41	296	150	102	102
	72 14M 85	SC	72	320,86	318,06	-	150	102	102
	80 14M 85	SC	80	356,51	353,71	-	150	102	102
	90 14M 85	SC	90	401,07	398,28	-	150	102	102
	112 14M 85	SC	112	499,11	496,32	-	150	102	102
	144 14M 85	SC	144	641,71	638,92	-	150	102	102
	168 14M 85	SC	168	748,66	745,87	-	150	102	102
	192 14M 85	SC	192	855,62	852,82	-	165	102	102
	216 14M 85	SC	216	962,57	959,76	-	165	102	102

HTD 14M 115 (passo 14 mm) per cinghia di larghezza 115 mm HTD 14M 115 (14 mm pitch) for 115 mm width belt

	Codice Code	Disegno Drawing	N° Denti Teeth	Dp	De	Df	Dm	B	L
Acciaio/Steel	28 14M 115 F	AF	28	124,78	121,98	128	100	133	148
	29 14M 115 F	AF	29	129,23	126,44	138	100	133	148
	30 14M 115 F	AF	30	133,69	130,90	138	100	133	148
	32 14M 115 F	AF	32	142,60	139,81	154	100	133	148
	34 14M 115 F	AF	34	151,51	148,72	160	100	133	148
	36 14M 115 F	AF	36	160,43	157,68	168	120	133	148
	38 14M 115 F	AF	38	169,34	166,60	183	120	133	148
	40 14M 115 F	AF	40	178,25	175,49	188	135	133	148
Ghisa/Cast Iron	44 14M 115 F	AF	44	196,08	193,28	211	140	133	148
	48 14M 115 F	AF	48	213,90	211,11	226	150	133	148
	56 14M 115 F	AF	56	249,55	246,76	256	150	133	148
	64 14M 115 F	SBF	64	285,21	282,41	296	150	133	133
	72 14M 115	SC	72	320,86	318,06	-	150	133	133
	80 14M 115	SC	80	356,51	353,71	-	150	133	133
	90 14M 115	SC	90	401,07	398,28	-	150	133	133
	112 14M 115	SC	112	499,11	496,32	-	150	133	133
	144 14M 115	SC	144	641,71	638,92	-	165	133	133
	168 14M 115	SC	168	748,66	745,87	-	165	133	133
	192 14M 115	SC	192	855,62	852,82	-	165	133	133
	216 14M 115	SC	216	962,57	959,76	-	165	133	133

HTD 14M 170 (passo 14 mm) per cinghia di larghezza 170 mm HTD 14M 170 (14 mm pitch) for 170 mm width belt

	Codice Code	Disegno Drawing	N° Denti Teeth	Dp	De	Df	Dm	B	L
Acciaio/Steel	28 14M 170 F	AF	28	124,78	121,98	128	100	187	202
	29 14M 170 F	AF	29	129,23	126,44	138	100	187	202
	30 14M 170 F	AF	30	133,69	130,90	138	100	187	202
	32 14M 170 F	AF	32	142,60	139,81	154	100	187	202
	34 14M 170 F	AF	34	151,51	148,72	160	100	187	202
	36 14M 170 F	AF	36	160,43	157,68	168	120	187	202
	38 14M 170 F	AF	38	169,34	166,60	183	135	187	202
	40 14M 170 F	AF	40	178,25	175,49	188	140	187	202
	44 14M 170 F	AF	44	196,08	193,28	211	160	187	202
	48 14M 170 F	AF	48	213,90	211,11	226	160	187	202
	56 14M 170 F	AF	56	249,55	246,76	256	160	187	202
	64 14M 170 F	AF	64	285,21	282,41	296	180	187	202
Ghisa Cast Iron	72 14M 170	SB	72	320,86	318,06	-	180	187	187
	80 14M 170	SB	80	356,51	353,71	-	180	187	187
	90 14M 170	SC	90	401,07	398,28	-	180	187	187
	112 14M 170	SC	112	499,11	496,32	-	200	187	187
	144 14M 170	SC	144	641,71	638,92	-	220	187	187
	168 14M 170	SC	168	748,66	745,87	-	220	187	187
192 14M 170	SC	192	855,62	852,82	-	220	187	187	
216 14M 170	SC	216	962,57	959,76	-	220	187	187	

Df e Dm possono variare senza preavviso / Df and Dm can vary without notice

Nelle forme costruttive gli scarichi di alleggerimento possono leggermente variare / During manufacturing, the lightening relief may vary slightly

PULEGGE DENTATE PASSO HTD PER BUSSOLA CONICA HTD PITCH TAPER BORE TIMING PULLEYS

HTD 8M 20 (passo 8 mm) per cinghia di larghezza 20 mm
HTD 8M 20 (8 mm pitch) for 20 mm width belt

	Codice Code	Disegno Drawing	N° Denti Teeth	Dp	De	Df	Dm	B	L	Bussola Taper Bush
Acciaio/Steel	T22 8M 20 F	5F	22	56,02	54,65	60	-	28	22	1008
	T24 8M 20 F	5F	24	61,12	59,75	66	-	28	22	1108
	T26 8M 20 F	5F	26	66,21	64,84	70	-	28	22	1108
	T28 8M 20 F	5F	28	71,30	70,08	75	-	28	22	1108
	T30 8M 20 F	5F	30	76,39	75,13	83	-	28	22	1108
	T32 8M 20 F	5F	32	81,49	80,16	87	-	28	25	1610
	T34 8M 20 F	5F	34	86,58	85,22	91	-	28	25	1610
	T36 8M 20 F	5F	36	91,67	90,30	97	-	28	25	1610
	T38 8M 20 F	5F	38	96,77	95,39	102	-	28	25	1610
	T40 8M 20 F	5F	40	101,86	100,49	106	-	28	25	1610
	T44 8M 20 F	8F	44	112,05	110,67	120	92	28	32	2012
	T48 8M 20 F	8F	48	122,23	120,86	128	96	28	32	2012
	T56 8M 20 F	8F	56	142,60	141,23	150	110	28	32	2012
	T64 8M 20 F	8WF	64	162,97	161,60	168	110	28	32	2012
	T72 8M 20 F	8WF	72	183,35	181,97	192	110	28	32	2012
* Ghisa/Cast Iron	T80 8M 20	8W	80	203,72	202,35	-	110	28	32	2012
	T90 8M 20	8W	90	229,18	227,81	-	110	28	32	2012

*** Ghisa/Cast Iron**

HTD 8M 30 (passo 8 mm) per cinghia di larghezza 30 mm
HTD 8M 30 (8 mm pitch) for 30 mm width belt

	Codice Code	Disegno Drawing	N° Denti Teeth	Dp	De	Df	Dm	B	L	Bussola Taper Bush
Acciaio/Steel	T22 8M 30 F	5F	22	56,02	54,65	60	-	38	22	1008
	T24 8M 30 F	5F	24	61,12	59,75	66	-	38	22	1108
	T26 8M 30 F	5F	26	66,21	64,84	70	-	38	22	1108
	T28 8M 30 F	5F	28	71,30	70,08	75	-	38	25	1210
	T30 8M 30 F	3F	30	76,39	75,13	83	-	38	38	1615
	T32 8M 30 F	3F	32	81,49	80,16	87	-	38	38	1615
	T34 8M 30 F	3F	34	86,58	85,22	91	-	38	38	1615
	T36 8M 30 F	3F	36	91,67	90,30	97	-	38	38	1615
	T38 8M 30 F	3F	38	96,77	95,39	102	-	38	38	1615
	T40 8M 30 F	3F	40	101,86	100,49	106	-	38	38	1615
	T44 8M 30 F	4F	44	112,05	110,67	120	-	38	32	2012
	T48 8M 30 F	4F	48	122,23	120,86	128	-	38	32	2012
	T56 8M 30 F	4F	56	142,60	141,23	150	-	38	32	2012
	T64 8M 30 F	8F	64	162,97	161,60	168	125	38	45	2517
	T72 8M 30 F	8WF	72	183,35	181,97	192	125	38	45	2517
* Ghisa/Cast Iron	T80 8M 30	8W	80	203,72	202,35	-	125	38	45	2517
	T90 8M 30	8W	90	229,18	227,81	-	125	38	45	2517
	T112 8M 30	8A	112	285,21	283,83	-	125	38	45	2517
	T144 8M 30	8A	144	366,69	365,32	-	125	38	45	2517

*** Ghisa/Cast Iron**

HTD 8M 50 (passo 8 mm) per cinghia di larghezza 50 mm
HTD 8M 50 (8 mm pitch) for 50 mm width belt

	Codice Code	Disegno Drawing	N° Denti Teeth	Dp	De	Df	Dm	B	L	Bussola Taper Bush
Acciaio/Steel	T28 8M 50 F	4F	28	71,30	70,08	75	-	60	25	1210
	T30 8M 50 F	5F	30	76,39	75,13	83	-	60	38	1615
	T32 8M 50 F	5F	32	81,49	80,16	87	-	60	38	1615
	T34 8M 50 F	5F	34	86,58	85,22	91	-	60	38	1615
	T36 8M 50 F	5F	36	91,67	90,30	97	-	60	38	1615
	T38 8M 50 F	5F	38	96,77	95,39	102	-	60	38	1615
	T40 8M 50 F	4F	40	101,86	100,49	106	-	60	32	2012
	T44 8M 50 F	4F	44	112,05	110,67	120	-	60	32	2012
	T48 8M 50 F	4F	48	122,23	120,86	128	-	60	32	2012
	T56 8M 50 F	4F	56	142,60	141,23	150	-	60	45	2517
	T64 8M 50 F	4F	64	162,97	161,60	168	-	60	45	2517
	T72 8M 50 F	9WF	72	183,35	181,97	192	125	60	45	2517
Ghisa Cast Iron	T80 8M 50	9W	80	203,72	202,35	-	150	60	51	3020
	T90 8M 50	9W	90	229,18	227,81	-	160	60	51	3020
	T112 8M 50	9A	112	285,21	283,83	-	170	60	51	3020
	T144 8M 50	9A	144	366,69	365,32	-	170	60	51	3020
	T168 8M 50	7A	168	427,81	426,44	-	198	60	65	3525
T192 8M 50	7A	192	488,92	487,55	-	198	60	65	3525	

Df e Dm possono variare senza preavviso / Df and Dm can vary without notice
Nelle forme costruttive gli scarichi di alleggerimento possono leggermente variare / During manufacturing, the lightening relief may vary slightly

PULEGGE DENTATE PASSO HTD PER BUSSOLA CONICA

HTD PITCH TAPER BORE TIMING PULLEYS

HTD 8M 85 (passo 8 mm) per cinghia di larghezza 85 mm
HTD 8M 85 (8 mm pitch) for 85 mm width belt

	Codice Code	Disegno Drawing	N° Denti Teeth	Dp	De	Df	Dm	B	L	Bussola Taper Bush
Acciaio/Steel	T34 8M 85 F	4F	34	86,58	85,22	91	-	95	38	1615
	T36 8M 85 F	4F	36	91,67	90,30	97	-	95	38	1615
	T38 8M 85 F	4F	38	96,77	95,39	102	-	95	38	1615
	T40 8M 85 F	4F	40	101,86	100,49	106	-	95	32	2012
	T44 8M 85 F	4F	44	112,05	110,67	120	-	95	32	2012
	T48 8M 85 F	4F	48	122,23	120,86	128	-	95	45	2517
	T56 8M 85 F	4F	56	142,60	141,23	150	-	95	45	2517
	T64 8M 85 F	4F	64	162,97	161,60	168	-	95	45	2517
	T72 8M 85 F	4F	72	183,35	181,97	192	-	95	51	3020
Ghisa Cast Iron	T80 8M 85	9W	80	203,72	202,35	-	145	95	51	3020
	T90 8M 85	9W	90	229,18	227,81	-	170	95	51	3020
	T112 8M 85	9A	112	285,21	283,83	-	170	95	51	3020
	T144 8M 85	9A	144	366,69	365,32	-	198	95	65	3525
	T168 8M 85	9A	168	427,81	426,44	-	198	95	65	3525
	T192 8M 85	9A	192	488,92	487,55	-	198	95	65	3525

HTD 14M 40 (passo 14 mm) per cinghia di larghezza 40 mm
HTD 14M 40 (14 mm pitch) for 40 mm width belt

	Codice Code	Disegno Drawing	N° Denti Teeth	Dp	De	Df	Dm	B	L	Bussola Taper Bush
Acciaio/Steel	T 28 14M 40 F	4F	28	124,78	121,98	128	-	54	32	2012
	T 29 14M 40 F	4F	29	129,23	126,44	138	-	54	32	2012
	T 30 14M 40 F	4F	30	133,69	130,90	138	-	54	32	2012
	T 32 14M 40 F	4F	32	142,60	139,81	154	-	54	32	2012
	T 34 14M 40 F	4F	34	151,51	148,72	160	-	54	45	2517
	T 36 14M 40 F	4F	36	160,43	157,68	168	-	54	45	2517
	T 38 14M 40 F	4F	38	169,34	166,60	183	-	54	45	2517
	T 40 14M 40 F	4F	40	178,25	175,49	188	-	54	45	2517
	T 44 14M 40 F	4F	44	196,08	193,28	211	-	54	51	3020
	T 48 14M 40 F	4F	48	213,90	211,11	226	-	54	51	3020
Ghisa Cast Iron	T 56 14M 40 F	9WF	56	249,55	246,76	256	170	54	51	3020
	T 64 14M 40 F	9WF	64	285,21	282,41	296	170	54	51	3020
	T 72 14M 40	9A	72	320,86	318,06	-	170	54	51	3020
	T 80 14M 40	9A	80	356,51	353,71	-	170	54	51	3020
	T 90 14M 40	9A	90	401,07	398,28	-	170	54	51	3020
	T 112 14M 40	9A	112	499,11	496,32	-	170	54	51	3020
	T 144 14M 40	9A	144	641,71	638,92	-	170	54	51	3020
	T 168 14M 40	9A	168	748,66	745,87	-	170	54	51	3020
	T 192 14M 40	9A	192	855,62	852,82	-	170	54	51	3020
	T 216 14M 40	9A	216	962,57	959,76	-	170	54	51	3020

HTD 14M 55 (passo 14 mm) per cinghia di larghezza 55 mm
HTD 14M 55 (14 mm pitch) for 55 mm width belt

	Codice Code	Disegno Drawing	N° Denti Teeth	Dp	De	Df	Dm	B	L	Bussola Taper Bush
Acciaio/Steel	T 28 14M 55 F	4F	28	124,78	121,98	128	-	70	32	2012
	T 29 14M 55 F	4F	29	129,23	126,44	138	-	70	32	2012
	T 30 14M 55 F	4F	30	133,69	130,90	138	-	70	45	2517
	T 32 14M 55 F	4F	32	142,60	139,81	154	-	70	45	2517
	T 34 14M 55 F	4F	34	151,51	148,72	160	-	70	45	2517
	T 36 14M 55 F	4F	36	160,43	157,68	168	-	70	45	2517
	T 38 14M 55 F	4F	38	169,34	166,60	183	-	70	45	2517
	T 40 14M 55 F	4F	40	178,25	175,49	188	-	70	45	2517
	T 44 14M 55 F	4F	44	196,08	193,28	211	-	70	51	3020
	T 48 14M 55 F	4F	48	213,90	211,11	226	-	70	51	3020
Ghisa Cast Iron	T 56 14M 55 F	9WF	56	249,55	246,76	256	170	70	51	3020
	T 64 14M 55 F	9WF	64	285,21	282,41	296	170	70	51	3020
	T 72 14M 55	9A	72	320,86	318,06	-	170	70	51	3020
	T 80 14M 55	9A	80	356,51	353,71	-	170	70	51	3020
	T 90 14M 55	9A	90	401,07	398,28	-	170	70	51	3020
	T 112 14M 55	9A	112	499,11	496,32	-	170	70	51	3020
	T 144 14M 55	9A	144	641,71	638,92	-	170	70	51	3020
	T 168 14M 55	9A	168	748,66	745,87	-	170	70	51	3020
	T 192 14M 55	9A	192	855,62	852,82	-	170	70	51	3020
	T 216 14M 55	7A	216	962,57	959,76	-	190	70	89	3535

Df e Dm possono variare senza preavviso / Df and Dm can vary without notice

Nelle forme costruttive gli scarichi di alleggerimento possono leggermente variare / During manufacturing, the lightening relief may vary slightly

PULEGGE DENTATE PASSO HTD PER BUSSOLA CONICA HTD PITCH TAPER BORE TIMING PULLEYS

HTD 14M 85 (passo 14 mm) per cinghia di larghezza 85 mm
HTD 14M 85 (14 mm pitch) for 85 mm width belt

	Codice Code	Disegno Drawing	N° Denti Teeth	Dp	De	Df	Dm	B	L	Bussola Taper Bush
Acciaio/Steel	T 28 14M 85 F	4F	28	124,78	121,98	128	-	102	45	2517
	T 29 14M 85 F	4F	29	129,23	126,44	138	-	102	45	2517
	T 30 14M 85 F	4F	30	133,69	130,90	138	-	102	45	2517
	T 32 14M 85 F	4F	32	142,60	139,81	154	-	102	45	2517
	T 34 14M 85 F	4F	34	151,51	148,72	160	-	102	45	2517
	T 36 14M 85 F	4F	36	160,43	157,68	168	-	102	51	3020
	T 38 14M 85 F	4F	38	169,34	166,60	183	-	102	51	3020
	T 40 14M 85 F	4F	40	178,25	175,49	188	-	102	51	3020
	T 44 14M 85 F	4F	44	196,08	193,28	211	-	102	51	3020
	T 48 14M 85 F	4F	48	213,90	211,11	226	-	102	51	3020
Ghisa Cast Iron	T 56 14M 85 F	4F	56	249,55	246,76	256	-	102	65	3525
	T 64 14M 85 F	9WF	64	285,21	282,41	296	190	102	65	3525
	T 72 14M 85	9W	72	320,86	318,06	-	190	102	65	3525
	T 80 14M 85	9A	80	356,51	353,71	-	190	102	65	3525
	T 90 14M 85	9A	90	401,07	398,28	-	190	102	65	3525
	T 112 14M 85	9A	112	499,11	496,32	-	190	102	65	3525
	T 144 14M 85	9A	144	641,71	638,92	-	190	102	65	3525
	T 168 14M 85	9A	168	748,66	745,87	-	190	102	65	3525
	T 192 14M 85	3A	192	855,62	852,82	-	230	102	102	4040
	T 216 14M 85	3A	216	962,57	959,76	-	230	102	102	4040

HTD 14M 115 (passo 14 mm) per cinghia di larghezza 115 mm
HTD 14M 115 (14 mm pitch) for 115 mm width belt

	Codice Code	Disegno Drawing	N° Denti Teeth	Dp	De	Df	Dm	B	L	Bussola Taper Bush
Acciaio/Steel	T 29 14M 115 F	4F	29	129,23	126,44	138	-	133	45	2517
	T 30 14M 115 F	4F	30	133,69	130,90	138	-	133	45	2517
	T 32 14M 115 F	4F	32	142,60	139,81	154	-	133	45	2517
	T 34 14M 115 F	4F	34	151,51	148,72	160	-	133	45	2517
	T 36 14M 115 F	4F	36	160,43	157,68	168	-	133	51	3020
	T 38 14M 115 F	4F	38	169,34	166,60	183	-	133	51	3020
	T 40 14M 115 F	4F	40	178,25	175,49	188	-	133	51	3020
	T 44 14M 115 F	4F	44	196,08	193,28	211	-	133	76	3030
	T 48 14M 115 F	4F	48	213,90	211,11	226	-	133	76	3030
	T 56 14M 115 F	4F	56	249,55	246,76	256	-	133	89	3535
Ghisa Cast Iron	T 64 14M 115 F	9WF	64	285,21	282,41	296	190	133	89	3535
	T 72 14M 115	9W	72	320,86	318,06	-	190	133	89	3535
	T 80 14M 115	9A	80	356,51	353,71	-	190	133	89	3535
	T 90 14M 115	9A	90	401,07	398,28	-	190	133	89	3535
	T 112 14M 115	9A	112	499,11	496,32	-	190	133	89	3535
	T 144 14M 115	9A	144	641,71	638,92	-	230	133	102	4040
	T 168 14M 115	9A	168	748,66	745,87	-	230	133	102	4040
	T 192 14M 115	9A	192	855,62	852,82	-	230	133	102	4040
	T 216 14M 115	9A	216	962,57	959,76	-	230	133	102	4040

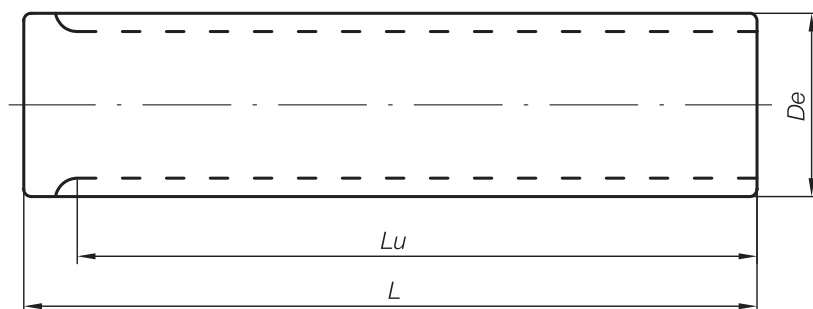
HTD 14M 170 (passo 14 mm) per cinghia di larghezza 170 mm
HTD 14M 170 (14 mm pitch) for 170 mm width belt

	Codice Code	Disegno Drawing	N° Denti Teeth	Dp	De	Df	Dm	B	L	Bussola Taper Bush
Acciaio Steel	T 38 14M 170 F	4F	38	169,34	166,60	183	-	187	76	3030
	T 40 14M 170 F	4F	40	178,25	175,49	188	-	187	76	3030
	T 44 14M 170 F	4F	44	196,08	193,28	211	-	187	89	3535
	T 48 14M 170 F	4F	48	213,90	211,11	226	-	187	89	3535
	T 56 14M 170 F	4F	56	249,55	246,76	256	-	187	89	3535
	T 64 14M 170 F	4F	64	285,21	282,41	296	-	187	102	4040
Ghisa Cast Iron	T 72 14M 170	9W	72	320,86	318,06	-	230	187	102	4040
	T 80 14M 170	9W	80	356,51	353,71	-	230	187	102	4040
	T 90 14M 170	9A	90	401,07	398,28	-	230	187	102	4040
	T 112 14M 170	9A	112	499,11	496,32	-	265	187	127	5050
	T 144 14M 170	9A	144	641,71	638,92	-	265	187	127	5050
	T 168 14M 170	9A	168	748,66	745,87	-	265	187	127	5050
	T 192 14M 170	9A	192	855,62	852,82	-	265	187	127	5050
	T 216 14M 170	9A	216	962,57	959,76	-	265	187	127	5050

Df e Dm possono variare senza preavviso / Df and Dm can vary without notice
Nelle forme costruttive gli scarichi di alleggerimento possono leggermente variare / During manufacturing, the lightening relief may vary slightly

BARRE DENTATE TIMING BARS

Dentatura totale $Lu=L$ / Total toothing $Lu=L$



BARRE DENTATE PASSO METRICO T T METRIC PITCH TIMING BARS

T2,5 (passo 2,5 mm) / T2,5 (2,5 mm pitch)

Alluminio/Aluminium	Codice Code	N° Denti Teeth	De	Lu	L
	T2,5-10	10	7,44	50	75
T2,5-12	12	9,03	50	75	
T2,5-13	13	9,83	50	75	
T2,5-14	14	10,62	50	75	
T2,5-15	15	11,42	50	75	
T2,5-16	16	12,21	50	75	
T2,5-17	17	13,01	50	75	
T2,5-18	18	13,80	50	75	
T2,5-19	19	14,60	90	120	
T2,5-20	20	15,40	90	120	
T2,5-21	21	16,19	90	120	
T2,5-22	22	16,99	125	140	
T2,5-23	23	17,78	125	140	
T2,5-24	24	18,58	125	140	
T2,5-25	25	19,37	125	140	
T2,5-26	26	20,17	125	140	
T2,5-27	27	20,97	125	140	
T2,5-28	28	21,76	125	140	
T2,5-29	29	22,56	125	140	
T2,5-30	30	23,35	125	140	
T2,5-32	32	24,95	125	140	
T2,5-34	34	26,54	125	140	
T2,5-35	35	27,33	132	140	
T2,5-36	36	28,13	132	140	
T2,5-38	38	29,72	140	140	
T2,5-40	40	31,31	140	140	
T2,5-42	42	32,90	140	140	
T2,5-44	44	34,50	140	140	
T2,5-45	45	35,29	140	140	
T2,5-48	48	37,68	140	140	
T2,5-50	50	39,27	160	160	
T2,5-60	60	47,23	160	160	
T2,5-65	65	51,21	160	160	
T2,5-70	70	55,19	160	160	
T2,5-72	72	56,78	160	160	
T2,5-90	90	71,10	160	160	
T2,5-100	100	79,06	160	160	

T5 (passo 5 mm) / T5 (5 mm pitch)

Alluminio/Aluminium	Codice Code	N° Denti Teeth	De	Lu	L
	T5-10	10	15,09	125	140
T5-11	11	16,68	125	140	
T5-12	12	18,27	125	140	
T5-13	13	19,86	125	140	
T5-14	14	21,45	140	140	
T5-15	15	23,04	140	140	
T5-16	16	24,64	140	140	
T5-17	17	26,23	140	140	
T5-18	18	27,82	140	140	
T5-19	19	29,41	140	140	
T5-20	20	31,00	160	160	
T5-21	21	32,59	160	160	
T5-22	22	34,19	160	160	
T5-23	23	35,78	160	160	
T5-24	24	37,37	160	160	
T5-25	25	38,96	160	160	
T5-26	26	40,55	160	160	
T5-27	27	42,14	160	160	
T5-28	28	43,73	160	160	
T5-29	29	45,33	160	160	
T5-30	30	46,92	160	160	
T5-32	32	50,10	160	160	
T5-34	34	53,28	160	160	
T5-35	35	54,88	160	160	
T5-36	36	56,47	160	160	
T5-37	37	58,06	160	160	
T5-38	38	59,65	160	160	
T5-40	40	62,83	160	160	
T5-42	42	66,02	160	160	
T5-44	44	69,20	160	160	
T5-45	45	70,79	160	160	
T5-46	46	72,38	160	160	
T5-48	48	75,57	160	160	
T5-50	50	78,75	160	160	
T5-60	60	94,67	160	160	
T5-64	64	101,03	160	160	
T5-72	72	113,76	160	160	
T5-80	80	126,50	160	160	
T5-90	90	142,41	160	160	
T5-100	100	158,33	160	160	

T10 (passo 10 mm) / T10 (10 mm pitch)

Alluminio/Aluminium	Codice Code	N° Denti Teeth	De	Lu	L	Codice Code	N° Denti Teeth	De	Lu	L
	T10-10	10	29,98	140	140	T10-25	25	77,73	160	160
T10-11	11	33,17	140	140	T10-26	26	80,91	160	160	
T10-12	12	36,35	140	140	T10-27	27	84,10	160	160	
T10-13	13	39,53	140	140	T10-28	28	87,28	160	160	
T10-14	14	42,71	160	160	T10-30	30	93,65	160	160	
T10-15	15	45,90	160	160	T10-32	32	100,01	160	160	
T10-16	16	49,08	160	160	T10-34	34	106,38	160	160	
T10-17	17	52,26	160	160	T10-36	36	112,74	160	160	
T10-18	18	55,45	160	160	T10-38	38	119,11	160	160	
T10-19	19	58,63	160	160	T10-40	40	125,48	160	160	
T10-20	20	61,81	160	160	T10-45	45	141,39	160	160	
T10-21	21	65,00	160	160	T10-48	48	150,94	160	160	
T10-22	22	68,18	160	160	T10-60	60	189,14	160	160	
T10-23	23	71,36	160	160	T10-72	72	227,34	160	160	
T10-24	24	74,55	160	160						

BARRE DENTATE PASSO METRICO AT AT METRIC PITCH TIMING BARS

AT5 (passo 5 mm) AT5 (5 mm pitch)					
Alluminio/Aluminium	Codice Code	N° Denti Teeth	De	Lu	L
	AT5-12	12	17,87	140	140
	AT5-13	13	19,46	140	140
	AT5-14	14	21,05	140	140
	AT5-15	15	22,64	140	140
	AT5-16	16	24,24	140	140
	AT5-17	17	25,83	140	140
	AT5-18	18	27,42	140	140
	AT5-19	19	29,01	140	140
	AT5-20	20	30,60	160	160
	AT5-21	21	32,19	160	160
	AT5-22	22	33,79	160	160
	AT5-23	23	35,38	160	160
	AT5-24	24	36,97	160	160
	AT5-25	25	38,56	160	160
	AT5-26	26	40,15	160	160
	AT5-27	27	41,74	160	160
	AT5-28	28	43,33	160	160
	AT5-29	29	44,93	160	160
	AT5-30	30	46,52	160	160
	AT5-31	31	48,11	160	160
	AT5-32	32	49,70	160	160
	AT5-34	34	52,88	160	160
	AT5-35	35	54,48	160	160
	AT5-36	36	56,07	160	160
	AT5-38	38	59,25	160	160
	AT5-40	40	62,43	160	160
AT5-42	42	65,62	160	160	
AT5-44	44	68,80	160	160	
AT5-45	45	70,90	160	160	
AT5-46	46	71,98	160	160	
AT5-48	48	75,17	160	160	
AT5-50	50	78,35	160	160	
AT5-60	60	94,27	160	160	
AT5-64	64	100,63	160	160	
AT5-72	72	113,36	160	160	

AT10 (passo 10 mm) AT10 (10 mm pitch)					
Alluminio/Aluminium	Codice Code	N° Denti Teeth	De	Lu	L
	AT10-15	15	45,90	160	160
	AT10-16	16	49,08	160	160
	AT10-17	17	52,26	160	160
	AT10-18	18	55,45	160	160
	AT10-19	19	58,63	160	160
	AT10-20	20	61,81	160	160
	AT10-21	21	65,00	160	160
	AT10-22	22	68,18	160	160
	AT10-23	23	71,36	160	160
	AT10-24	24	74,55	160	160
	AT10-25	25	77,73	160	160
	AT10-26	26	80,91	160	160
	AT10-27	27	84,10	160	160
	AT10-28	28	87,28	160	160
	AT10-29	29	90,46	160	160
	AT10-30	30	93,65	160	160
	AT10-32	32	100,01	160	160
	AT10-34	34	106,38	160	160
	AT10-35	35	109,56	160	160
	AT10-36	36	112,74	160	160
	AT10-38	38	119,11	160	160
	AT10-40	40	125,48	160	160
	AT10-42	42	131,84	160	160
	AT10-44	44	138,21	160	160
	AT10-45	45	141,39	160	160
	AT10-48	48	150,94	160	160
	AT10-52	52	163,68	160	160
	AT10-60	60	189,14	160	160

BARRE DENTATE PASSO HTD HTD PITCH TIMING BARS

3M (passo 3 mm) 3M (3 mm pitch)

Alluminio/Aluminium	Codice Code	N° Denti Teeth	De	Lu	L
	3M-10	10	8,79	75	100
	3M-11	11	9,74	75	100
	3M-12	12	10,70	100	120
	3M-13	13	11,65	100	120
	3M-14	14	12,61	100	120
	3M-15	15	13,56	100	120
	3M-16	16	14,52	125	160
	3M-17	17	15,47	125	160
	3M-18	18	16,43	125	160
	3M-19	19	17,38	125	160
	3M-20	20	18,34	150	160
	3M-21	21	19,29	150	160
	3M-22	22	20,25	150	160
	3M-23	23	21,20	150	160
	3M-24	24	22,16	150	160
	3M-25	25	23,11	150	160
	3M-26	26	24,07	150	160
	3M-28	28	25,98	150	160
	3M-30	30	27,89	175	200
3M-32	32	29,80	175	200	
3M-34	34	31,71	175	200	
3M-36	36	33,62	200	200	
3M-38	38	35,53	200	200	
3M-40	40	37,44	200	200	
3M-42	42	39,35	200	200	
3M-45	45	42,21	200	200	
3M-48	48	45,08	200	200	
3M-60	60	56,54	200	200	
3M-72	72	68,00	200	200	

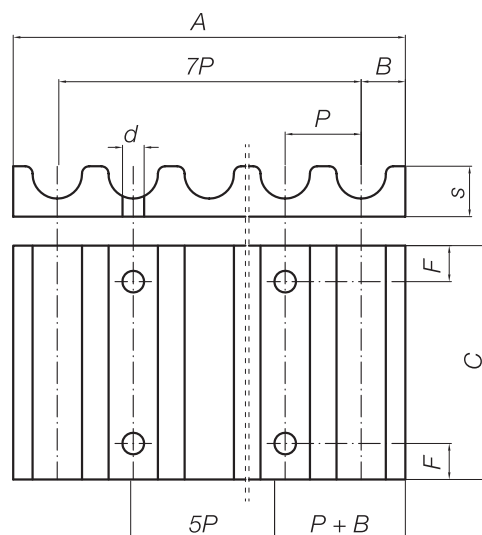
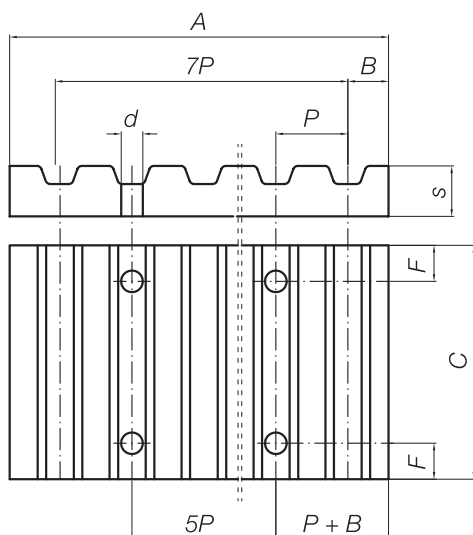
5M (passo 5 mm) 5M (5 mm pitch)

Alluminio/Aluminium	Codice Code	N° Denti Teeth	De	Lu	L
	5M-12	12	17,96	150	160
	5M-13	13	19,55	150	160
	5M-14	14	21,14	175	200
	5M-15	15	22,73	175	200
	5M-16	16	24,33	175	200
	5M-17	17	25,92	175	200
	5M-18	18	27,51	200	200
	5M-19	19	29,10	200	200
	5M-20	20	30,69	200	200
	5M-21	21	32,28	200	200
	5M-22	22	33,88	200	200
	5M-23	23	35,47	200	200
	5M-24	24	37,06	200	200
	5M-26	26	40,24	200	200
	5M-27	27	41,83	200	200
	5M-28	28	43,42	200	200
	5M-30	30	46,61	200	200
	5M-32	32	49,79	200	200
	5M-34	34	52,97	200	200
	5M-36	36	56,16	200	200
	5M-38	38	59,34	200	200
	5M-40	40	62,52	200	200
	5M-42	42	65,71	200	200
	5M-44	44	68,89	200	200
	5M-45	45	70,48	200	200
	5M-48	48	75,26	200	200
	5M-50	50	78,44	200	200
	5M-60	60	94,36	200	200
	5M-72	72	113,45	200	200

8M (passo 8 mm) 8M (8 mm pitch)

Alluminio/Aluminium	Codice Code	N° Denti Teeth	De	Lu	L
	8M-18	18	44,47	200	200
	8M-19	19	47,01	200	200
	8M-20	20	49,56	200	200
	8M-21	21	52,11	200	200
	8M-22	22	54,65	200	200
	8M-23	23	57,20	200	200
	8M-24	24	59,75	200	200
	8M-25	25	62,29	200	200
	8M-26	26	64,84	200	200
	8M-27	27	67,39	200	200
	8M-28	28	70,08	200	200
	8M-29	29	72,48	200	200
	8M-30	30	75,03	200	200
	8M-32	32	80,12	200	200
	8M-34	34	85,21	200	200
	8M-35	35	87,76	200	200
8M-36	36	90,31	200	200	
8M-38	38	95,40	200	200	
8M-40	40	100,49	200	200	

PIASTRE DENTATE CLAMPING PLATES



XL - L - H - T5 - T10 - T20 - AT5 - AT10 - AT20

HTD

Esempio codice di ordinazione / **Order code example**
PAT10-25: Piastra dentata passo AT10 per cinghia larga 25 mm
AT10 pitch clamping plate for 25 mm width belt

Piastrre dentate per cinghie con passo in pollici / **Clamping plates for imperial pitch belts**

Alluminio Alum.	Passo Pitch	F	d	B	A	S	Larghezze cinghia [1/100"] / Belt width [1/100"]									
							025	037	050	075	100	150	200	300	400	
							c									
*	XL	6	5,5	3,5	42,5	8	25,5	28,5	32	38	45					
*	L	8	9	5	76,6	15		36	39	45	51,5	64	77			
*	H	10	11	9	106,9	22			45	51	57,5	70	83	108	134	

Piastrre dentate per cinghie HTD / **Clamping plates for HTD pitch belts**

Alluminio Alum.	Passo Pitch	F	d	B	A	S	Larghezze cinghia [mm] / Belt width [mm]												
							6	9	10	15	20	25	30	40	50	55	85	115	170
							c												
*	5M	6	5,5	3,25	41,5	8	25	28		34		44							
*	8M	8	9	5	66	15			35	40	45		55		75		110		
*	14M	10	11	9	116	22						56		71		86	116	146	201

Piastrre dentate per cinghie con passo metrico / **Clamping plates for metric pitch belts**

Alluminio/Alum.	Passo Pitch	F	d	B	A	S	Larghezze cinghia [mm] / Belt width [mm]									
							9	10	16	20	25	32	50	75	100	
							c									
*	T5	6	5,5	3,25	41,65	8	25	29	35	39	44	51	69			
*	AT5															
*	T10	8	9	5	80	15		35	41		50	57	75	100	125	
*	AT10															
*	T20	10	11	10	160	20					56	63	81	106	132	
*	AT20															

BUSSELE CONICHE TAPER BUSHES

Bussole coniche / Taper bushes

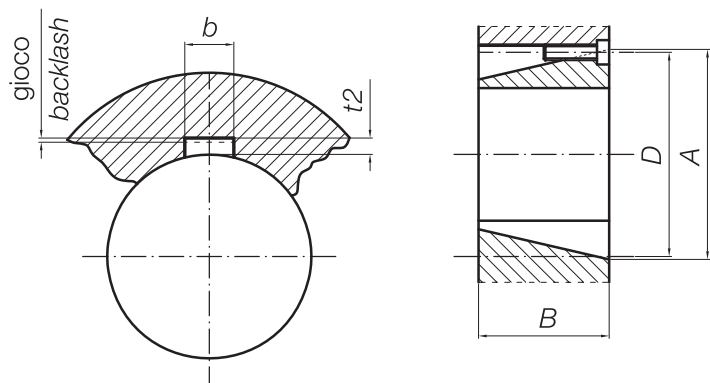
Ghisa/Cast Iron	Tipo Type	Ø Fori [mm] Bores Ø [mm]	A	B	D	N° viti Screws No.	Ø viti Screws Ø	Lunghezza viti Screws length	Chiave Keys	Coppia ser- raggio [daNm] Tightening torque [daNm]
	1008	10 11 12 14 16 18 20 22 24* 25*	35,2	22,0	33,7	2	1/4"	1/2"	3	0,6
	1108	10 11 12 14 16 18 19 20 22 24 25 28*	38,8	22,0	36,9	2	1/4"	1/2"	3	0,6
	1210	11 12 14 16 18 19 20 22 24 25 28 30 32	47,6	25,0	44,5	2	3/8"	5/8"	4	2
	1610	14 16 18 19 20 22 24 25 28 30 32 35 38 40 42*	57,2	25,0	54,0	2	3/8"	5/8"	4	2
	1615	14 16 18 19 20 22 24 25 28 30 32 35 38 40* 42*	57,2	38,0	54,0	2	3/8"	5/8"	4	2
	2012	18 19 20 22 24 25 28 30 32 35 38 40 42 45 48 50	69,9	32,0	66,7	2	7/16"	7/8"	6	3
	2517	20 22 24 25 28 30 32 38 40 42 45 48 50 55 60	85,7	45,0	82,5	2	1/2"	1"	6	5
	3020	25 28 30 32 38 40 42 45 48 50 55 60 65 70 75	108,0	51,0	101,6	2	5/8"	1 1/4"	8	9
	3030	35 38 40 42 45 48 50 55 60 65 70 75	108,0	76,0	101,6	2	5/8"	1 1/4"	8	9
	3525	35 38 40 42 45 48 50 55 60 65 70 75 80 85 90 95	127,0	65,0	122,7	3	1/2"	1 1/2"	10	10
	3535	35 38 40 42 45 48 50 55 60 65 70 75 80 85 90	127,0	89,0	122,7	3	1/2"	1 1/2"	10	10
	4030	40 42 45 48 50 55 60 65 70 75 80 85 90 95 100 105 110	146,0	78,0	140,7	3	5/8"	1 3/4"	14	19
	4040	40 42 45 48 50 55 60 65 70 75 80 85 90 95 100	146,0	101,6	140,7	3	5/8"	1 3/4"	14	19
	4545	55 60 65 70 75 80 85 90 95 100 105 110	162,0	114,3	155,7	3	3/4"	2"	14	24
5050	70 75 80 85 90 95 100 105 110 115 120 125	177,8	127,0	170,7	3	7/8"	2 1/4"	14	36	

N.B.: * Fori con cava ribassata DIN 6556

N.B.: * Bores with shallow keyway DIN 6556

Cave per chiavetta su bussola conica / Keyway for taper bush

Ghisa/Cast Iron	Ø foro bussola Bore Ø of the bush	Cava Keyway	
		b	t2
	10	3	1,4
	11 - 12	4	1,8
	13 - 17	5	2,3
	18 - 22	6	2,8
	23 - 30	8	3,3
	31-38	10	3,3
	39 - 44	12	3,3
	45 - 50	14	3,8
	51 - 58	16	4,3
	59 - 65	18	4,4
	66 - 75	20	4,9
	76 - 85	22	5,4
	86 - 95	25	5,4
96 - 110	28	6,4	
111 - 130	32	7,4	



IMPORTANTE: verificare che al montaggio vi sia sempre gioco in altezza tra la chiavetta e la cava.
IMPORTANT: during the assembly check always that sufficient clearance in eight exists between the key and the keyway

N.B.: Specifiche, dimensioni e tolleranze possono essere variate senza preavviso.

N.B.: Features, dimensions and tolerances can be changed without notice.

FLANGE PER PULEGGE DENTATE

FLANGES FOR TIMING PULLEYS

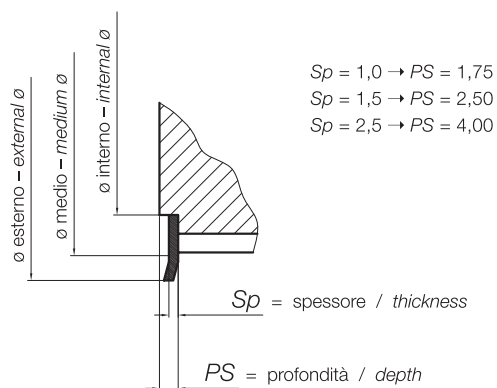
N° Denti Teeth	Profilo / Profile													N° Denti Teeth
	MXL	XL	L	H	XH	HTD3	HTD5	HTD8	HTD14	T2,5	T/AT5	T/AT10	T/AT20	
10		Bm1	Bm5	-	-	Bm73	-	-	-	-	Bm0	Bm5	-	10
11		Bm1	Bm7	-	-	Bm73	-	-	-	-	Bm1	Bm6	-	11
12	Bm73	Bm2	Bm7	Bm12	-	Bm74	Bm1	-	-	Bm73	Bm1	Bm7	-	12
13	Bm73	Bm2	Bm8	Bm13	-	Bm74	Bm2	-	-	Bm73	Bm2	Bm8	-	13
14	Bm73	Bm3	Bm8	Bm14	-	Bm75	Bm2	-	-	Bm74	Bm2	Bm9	-	14
15	Bm73	Bm3	Bm10	Bm15	-	Bm75	Bm3	-	-	Bm74	Bm3	Bm10	Bm106	15
16	Bm74	Bm3	Bm12	Bm16	-	Bm0	Bm3	-	-	Bm75	Bm4	Bm11	Bm107	16
17	Bm74	Bm5	Bm12	Bm17	-	Bm0	Bm4	-	-	Bm75	Bm4	Bm12	Bm107	17
18	Bm74	Bm5	Bm14	Bm18	Bm43	Bm1	Bm4	Bm9	-	Bm75	Bm4	Bm13	Bm92	18
19	Bm75	Bm5	Bm14	Bm19	Bm44	Bm1	Bm4	Bm10	-	Bm0	Bm5	Bm15	Bm108	19
20	Bm75	Bm7	Bm15	Bm20	Bm46	Bm2	Bm5	Bm11	-	Bm1	Bm5	Bm15	Bm43	20
21	Bm75	Bm7	Bm16	Bm21	Bm46	Bm2	Bm6	Bm12	-	Bm1	Bm6	Bm16	Bm43	21
22	Bm75	Bm7	Bm17	Bm23	Bm47	Bm2	Bm6	Bm14	-	Bm1	Bm6	Bm17	Bm45	22
23	Bm0	Bm8	Bm18	Bm23	Bm48	Bm2	Bm7	Bm14	Bm107	Bm1	Bm7	Bm18	Bm45	23
24	Bm0	Bm8	Bm18	Bm24	Bm49	Bm3	Bm7	Bm15	Bm90	Bm1	Bm7	Bm19	Bm47	24
25	Bm0	Bm8	Bm19	Bm24	Bm50	Bm3	Bm8	Bm15	Bm90	Bm2	Bm8	Bm19	Bm48	25
26	Bm1	Bm8	Bm20	Bm26	Bm51	Bm3	Bm8	Bm16	Bm92	Bm2	Bm8	Bm20	Bm48	26
27	Bm1	Bm9	Bm20	Bm27	Bm52	Bm4	Bm8	Bm16	Bm92	Bm2	Bm9	Bm21	Bm49	27
28	Bm1	Bm10	Bm21	Bm28	Bm55	Bm4	Bm8	Bm18	Bm43	Bm2	Bm9	Bm22	Bm50	28
29	Bm1	Bm10	Bm22	Bm28	Bm56	Bm4	Bm10	Bm18	Bm44	Bm2	Bm10	Bm23	Bm52	29
30	Bm2	Bm12	Bm23	Bm29	Bm57	Bm4	Bm10	Bm19	Bm45	Bm3	Bm10	Bm23	Bm52	30
31	Bm2	Bm12	Bm24	Bm31	Bm58	Bm5	Bm11	Bm19	Bm45	Bm4	Bm11	Bm24	Bm52	31
32	Bm2	Bm12	Bm24	Bm32	Bm60	Bm5	Bm12	Bm20	Bm46	Bm4	Bm11	Bm25	Bm55	32
33	Bm2	Bm12	Bm24	Bm32	Bm60	Bm5	Bm12	Bm20	Bm46	Bm4	Bm12	Bm26	Bm56	33
34	Bm2	Bm13	Bm26	Bm34	Bm62	Bm6	Bm12	Bm22	Bm47	Bm4	Bm12	Bm27	Bm57	34
35	Bm2	Bm14	Bm26	Bm36	Bm62	Bm6	Bm13	Bm22	Bm48	Bm4	Bm13	Bm27	Bm58	35
36	Bm3	Bm15	Bm27	Bm36	Bm65	Bm6	Bm14	Bm23	Bm49	Bm5	Bm14	Bm28	Bm60	36
37	Bm3	Bm15	Bm28	Bm37	-	Bm7	Bm15	Bm23	Bm49	Bm5	Bm14	Bm29	Bm72	37
38	Bm3	Bm16	Bm29	Bm37	-	Bm7	Bm15	Bm24	Bm50	Bm5	Bm15	Bm30	Bm72	38
39	Bm4	Bm16	Bm29	Bm38	-	Bm7	Bm15	Bm25	Bm50	Bm5	Bm15	Bm30	Bm61	39
40	Bm4	Bm16	Bm29	Bm38	-	Bm7	Bm15	Bm25	Bm51	Bm6	Bm15	Bm31	Bm65	40
41	Bm4	Bm17	Bm31	Bm39	-	Bm8	Bm16	Bm26	Bm51	Bm6	Bm16	Bm32	-	41
42	Bm4	Bm17	Bm31	Bm39	-	Bm8	Bm17	Bm26	Bm52	Bm6	Bm16	Bm34	-	42
43	Bm4	Bm18	Bm32	Bm40	-	Bm8	Bm17	Bm27	Bm52	Bm6	Bm17	Bm34	-	43
44	Bm4	Bm18	Bm32	Bm40	-	Bm8	Bm17	Bm27	Bm55	Bm7	Bm17	Bm34	-	44
45	Bm5	Bm18	Bm34	Bm41	-	Bm9	Bm18	Bm28	Bm56	Bm7	Bm18	Bm35	-	45
46	Bm5	Bm19	Bm35	Bm41	-	Bm9	Bm18	Bm29	Bm56	Bm7	Bm18	Bm36	-	46
47	Bm5	Bm19	Bm36	Bm42	-	Bm10	Bm18	Bm29	Bm57	Bm7	Bm18	Bm36	-	47
48	Bm5	Bm20	Bm36	Bm42	-	Bm10	Bm19	Bm29	Bm57	Bm7	Bm19	Bm37	-	48
49	Bm6	Bm20	Bm37	Bm55	-	Bm10	Bm19	Bm31	Bm58	Bm8	Bm19	Bm37	-	49
50	Bm6	Bm20	Bm37	Bm56	-	Bm10	Bm20	Bm31	Bm59	Bm8	Bm20	Bm38	-	50
51	Bm6	Bm20	Bm37	Bm56	-	Bm11	Bm20	Bm32	Bm60	Bm9	Bm20	Bm38	-	51
52	Bm6	Bm21	Bm38	Bm57	-	Bm11	Bm20	Bm34	Bm60	Bm9	Bm20	Bm38	-	52
53	Bm6	Bm21	Bm38	Bm57	-	Bm11	Bm21	Bm34	Bm72	Bm9	Bm21	Bm39	-	53
54	Bm7	Bm22	Bm38	Bm58	-	Bm12	Bm21	Bm34	Bm72	Bm9	Bm21	Bm39	-	54
55	Bm7	Bm22	Bm39	Bm58	-	Bm12	Bm22	Bm34	Bm61	Bm9	Bm22	Bm40	-	55
56	Bm7	Bm23	Bm39	Bm60	-	Bm12	Bm22	Bm36	Bm61	Bm10	Bm22	Bm40	-	56
57	Bm7	Bm23	Bm40	Bm60	-	Bm13	Bm23	Bm36	-	Bm10	Bm23	Bm40	-	57
58	Bm7	Bm23	Bm40	Bm60	-	Bm13	Bm23	Bm36	Bm65	Bm10	Bm23	Bm41	-	58
59	Bm7	Bm24	Bm40	Bm61	-	Bm14	Bm23	Bm37	-	Bm10	Bm23	Bm41	-	59
60	Bm8	Bm24	Bm41	Bm61	-	Bm14	Bm24	Bm37	Bm65	Bm10	Bm24	Bm42	-	60
61	Bm8	-	-	-	-	Bm15	-	-	-	Bm11	Bm24	Bm42	-	61
62	Bm9	-	-	-	-	Bm15	-	-	-	Bm11	Bm25	-	-	62
63	Bm9	-	-	-	-	Bm15	-	-	-	Bm11	Bm25	-	-	63
64	Bm9	-	-	-	-	Bm15	-	Bm38	Bm63	Bm11	Bm25	-	-	64
65	Bm9	-	-	-	-	Bm15	-	-	-	Bm12	Bm26	-	-	65
66	Bm9	-	-	-	-	Bm16	-	-	-	Bm12	Bm26	-	-	66
67	Bm10	-	-	-	-	Bm16	-	-	-	-	-	-	-	67
68	Bm10	-	-	-	-	Bm16	-	-	-	-	-	-	-	68
69	Bm10	-	-	-	-	Bm17	-	-	-	-	-	-	-	69
70	Bm10	-	-	-	-	Bm17	-	-	-	-	-	-	-	70
71	Bm10	-	-	-	-	Bm17	-	-	-	-	-	-	-	71
72	Bm10	-	-	-	-	Bm17	-	Bm41	-	-	-	-	-	72

FLANGE PER PULEGGE DENTATE FLANGES FOR TIMING PULLEYS

Flange / Flanges						
Codice Code	Ø Esterno External Ø	Ø Medio Medium Ø	Ø Interno Internal Ø	Spessore mm Thickness mm		
				0,5	1,0	1,5
Bm73	12	-	6	*	*	
Bm74	15	-	8	*	*	
Bm75	16	13	9	*	*	
Bm0	19,5	16	12	*	*	
Bm1	22	17	13	*	*	
Bm2	25	20	15	*	*	
Bm3	28	24	18	*	*	
Bm4	32	26	21,5	*	*	
Bm5	36	31	25	*	*	*
Bm6	38	33	28	*	*	*
Bm7	41	37	28	*	*	*
Bm8	47	40	33		*	*
Bm9	48	40	37		*	*
Bm10	51	46	40		*	*
Bm11	54	48	43		*	*
Bm12	57	52	42		*	*
Bm13	60	54	47		*	*
Bm14	63	55	48		*	*
Bm15	66	58	52		*	*
Bm16	72	63	54		*	*
Bm17	75	68	60		*	*
Bm18	80	71	62		*	*
Bm19	83	76	68		*	*
Bm20	87	80	72		*	*
Bm21	91	83	76		*	*
Bm22	93	88	80		*	*
Bm23	97	93	83		*	*
Bm24	105	97	87		*	*
Bm25	106	98	90		*	*
Bm26	113	104	95		*	*
Bm27	118	108	100		*	*
Bm28	119	113	103		*	*
Bm29	127	122	104		*	*
Bm30	127	119	111		*	*
Bm31	131	124	115		*	*
Bm32	135	128	119		*	*
Bm34	143	-	120		*	*
Bm35	147	-	130		*	*
Bm36	152	143	124		*	*
Bm37	160	-	136		*	*
Bm38	168	161	148		*	*
Bm39	174	165	140			*
Bm40	182	-	165			*
Bm41	194	-	160			*
Bm42	200	-	173			*

Flange / Flanges					
Codice Code	Ø Esterno External Ø	Ø Medio Medium Ø	Ø Inter- no Inter- nal Ø	Spessore mm Thickness mm	
				1,5	2,5
Bm43	136	-	100	*	*
Bm44	140	-	110	*	*
Bm45	145	-	114	*	*
Bm46	155	140	120	*	*
Bm47	162	148	125	*	*
Bm48	168	-	148	*	*
Bm49	176	158	135	*	*
Bm50	182	-	133	*	*
Bm51	191	175	155	*	*
Bm52	200	-	173	*	*
Bm55	210	-	170	*	*
Bm56	213	-	185	*	*
Bm57	225	-	190	*	*
Bm58	236	-	200	*	*
Bm60	240	-	194	*	*
Bm61	255	-	225	*	*
Bm62	260	-	213	*	*
Bm63	290	-	250	*	*
Bm64	300	-	255	*	*
Bm65	275	-	240	*	*
Bm69	335	-	290	*	*
Bm72	250	-	213	*	*
Bm106	96	-	75	*	*
Bm107	110	-	86	*	*
Bm92	119	106	99	*	*
Bm108	127	122	104	*	*
Bm110	370	-	345	*	*

Predisposizione consigliata Suggested configuration

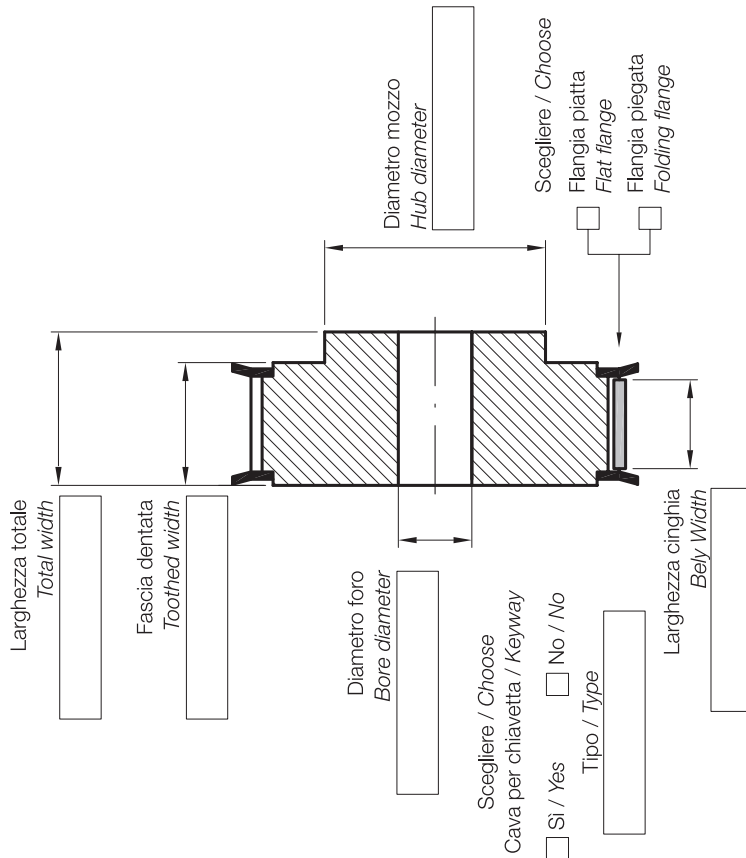


Inclinazione flange circa 15°
Flange slant approximately 15°

SCHIZZO PER PULEGGE DENTATE A DISEGNO DESIGN SKETCH FOR CUSTOM MADE TIMING PULLEYS



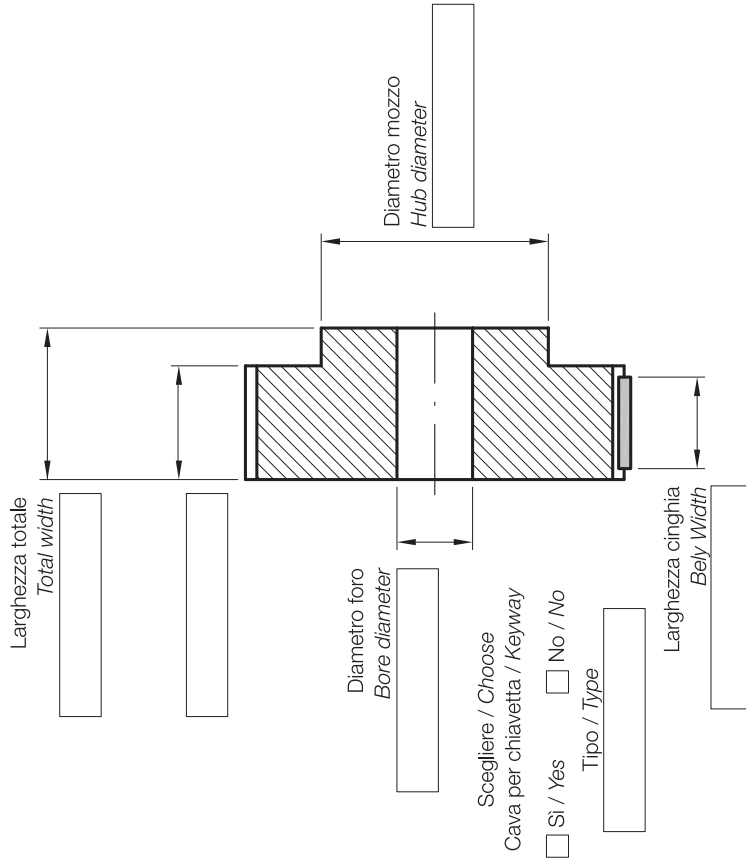
Puleggia con mozzo e flange - Tipo (A)
Pulley with hub and flanges - Type (A)



Materiale / Material _____
 Trattamento / Treatment _____
 N° denti / Teeth nr _____
 Profilo e passo / Profile and pitch _____
 Codice flangia / Flange code _____
 Note / Notes _____

Riferimento n° / Reference nr _____

Puleggia con mozzo senza flange - Tipo (B)
Pulley with hub, no flanges - Type (B)

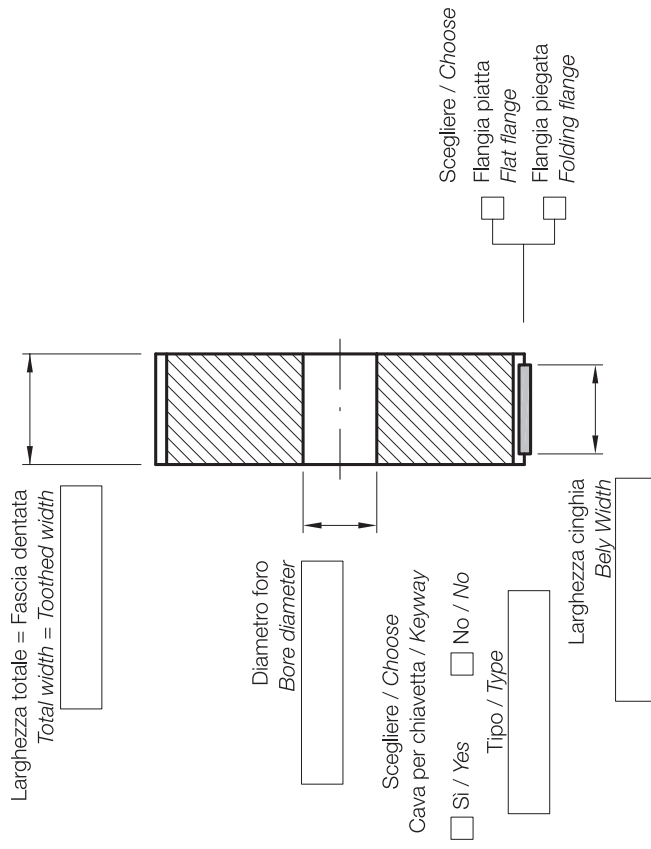


Materiale / Material _____
 Trattamento / Treatment _____
 N° denti / Teeth nr _____
 Profilo e passo / Profile and pitch _____
 Note / Notes _____

Riferimento n° / Reference nr _____

SCHIZZO PER PULEGGE DENTATE A DISEGNO DESIGN SKETCH FOR CUSTOM MADE TIMING PULLEYS

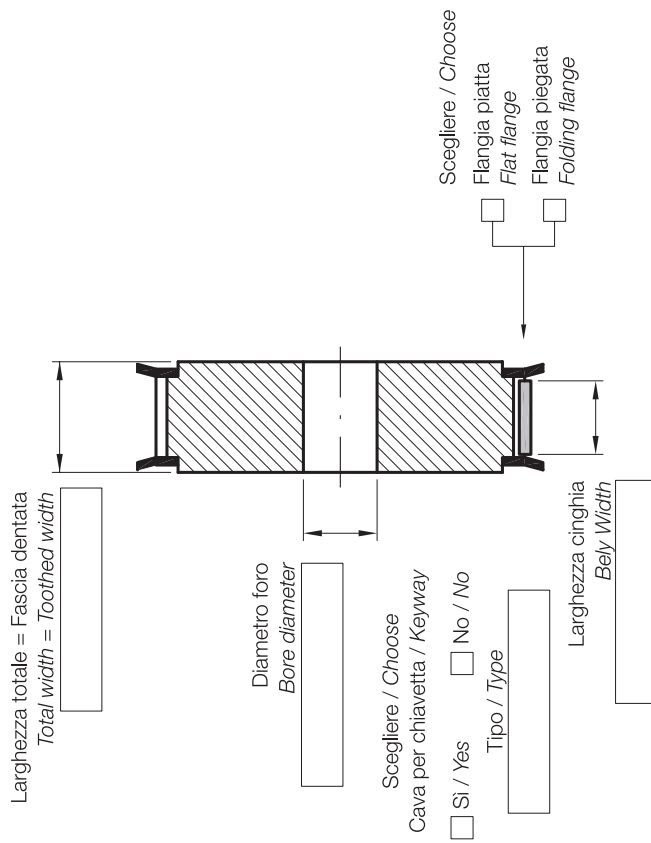
Puleggia senza mozzo e flange - Tipo (D)
Pulley without hub and flanges - Type (D)



Materiale / Material _____
Trattamento / Treatment _____
N° denti / Teeth nr _____
Profilo e passo / Profile and pitch _____
Note / Notes _____

Riferimento n° / Reference nr _____

Puleggia senza mozzo con flange - Tipo (C)
Pulley with flanges, no hub - Type (C)



Materiale / Material _____
Trattamento / Treatment _____
N° denti / Teeth nr _____
Profilo e passo / Profile and pitch _____
Codice flangia / Flange code _____
Note / Notes _____

Riferimento n° / Reference nr _____



BELARUS

Minsk
Phone +375 17 2802486
Info.ee@megadynegroup.com

BRASIL

Sorocaba
Phone +55 15 2101 7700
inquiries@jasonindustrial.com

CANADA

Edmonton
Phone: +1 780 461 4400
inquiries@jasonindustrial.com

Milton

Phone: +1 905 878 0532
info@samplabelting.ca

Montreal

Phone: +1 514 31 2341
inquiries@jasonindustrial.com

Toronto

Phone: +1 905 602 4400
inquiries@jasonindustrial.com

CHINA

Beijing
Phone +86 10 8150 7478
info.cn@megadynegroup.com

Foshan

Phone +86 757 83815530
info.cn@megadynegroup.com

Fujian

Phone +86 595 8816 0309
info.cn@megadynegroup.com

Ningbo

Phone +86 574 8650 2886
info.cn@megadynegroup.com

Qingdao

Phone +86 532 8765 2117
info.cn@megadynegroup.com

Shanghai

Phone +86 21 5447 1473
info.cn@megadynegroup.com

Shenyang

Phone +86 24 2572 3238
info.cn@megadynegroup.com

COLOMBIA

Cartagena
Phone: 011 57 313 501 5397
inquiries@jasonindustrial.com

CZECH REPUBLIC

Praha
Phone +420 2 8481 7181
office.cz@megadynegroup.com

FRANCE

Paris
Phone +33 1 6079 8200
info.fr@megadynegroup.com

St. Jean De Maurienne

Phone +33 4 7964 0613
info.fr@megadynegroup.com

GERMANY

Borchen
Phone +49 5251 8735 0
info.de@megadynegroup.com

Elchingen

Phone +49 7308 9665 0
produktion@megadynegroup.com

HUNGARY

Budapest
Phone +36 23 428 628
info.hu@megadynegroup.com

ITALY

Turin
Phone +39 011 926 8052
info@megadynegroup.com

Milan

Phone +39 039 689 601
info@samplabelting.com

MEXICO

Mexico C.P.
Phone +52 55 5587 3680
inquiries@jasonindustrial.com

POLAND

Bydgoszcz
Phone +48 52 348 77 12
info.pl@megadynegroup.com

SOUTH AFRICA

Johannesburg
Phone +27 (0)12 661 1652
info.sa@megadynegroup.com

Cape Town

Phone +27 (0)21 9820772
sales.za@megadynegroup.com

SPAIN

Barcelona
Phone +34 93 811 5450
info.sp@megadynegroup.com

SWEDEN

Kristianstad
Phone +46 10 1309600
info.se@megadynegroup.com

THAILAND

Bangkok
Phone: +66 96 620 7648
info.apac@megadynegroup.com

TURKEY

Izmir
Phone +90 232 877 07 00
info@rultrans.com.tr

U.K.

Birmingham
Phone: +44 1384 215 021
sales@megadynegroup.com

U.S.A

California
Phone +1 323 265 8061
inquiries@jasonindustrial.com

Florida

Phone +1 813 241 4111
inquiries@jasonindustrial.com

Georgia

Phone +770 887-9725
inquiries@jasonindustrial.com

Illinois

Phone: +1630 752 0600
inquiries@jasonindustrial.com

New Jersey Americas HQ

Phone +1 973 227 4904
inquiries@jasonindustrial.com

North Carolina

Phone +1 704 583 5388
inquiries@jasonindustrial.com

Oregon

Phone +1 888 231 7224
inquiries@jasonindustrial.com

South Carolina

Phone +1 864 288 9916
inquiries@jasonindustrial.com

Texas

Phone +1 972 438 6992
inquiries@jasonindustrial.com

HEADQUARTERS**ITALY Torino**

Via S. Lucia, 114
10075 Mathi (Torino)
Phone +39 011 926 8052
info@megadynegroup.com

www.megadynegroup.com
www.jasonindustrial.com
www.samplabelling.com